

SERVICE INSTRUCTION SHEET

TMD-5 Lubricator with 1.8 Liter Reservoir

Bridgeport, Part No. 26062

Operation

Lubricator includes a motor-driven, spring discharge piston pump. Pump cycle time is fixed by an integral gear reduction motor, which runs continuously when powered. Lubricator can be actuated manually by raising and releasing the manual feed knob.

Installation

Lubricator drive motor operates on either 110V AC or 220V AC power input voltage, 50/60 Hz.

Liquid level and pressure switches operate on 24V DC direct current voltage.

See Electrical Diagram for all electrical connections.

Oil

Use only a clean oil of the type and viscosity recommended by the machine manufacturer and approved by Bijur. Use of an unapproved oil may result in system malfunction.

Starting a New Machine

Fill reservoir with approved oil and operate lubricator manually until oil flows freely at all bearings.

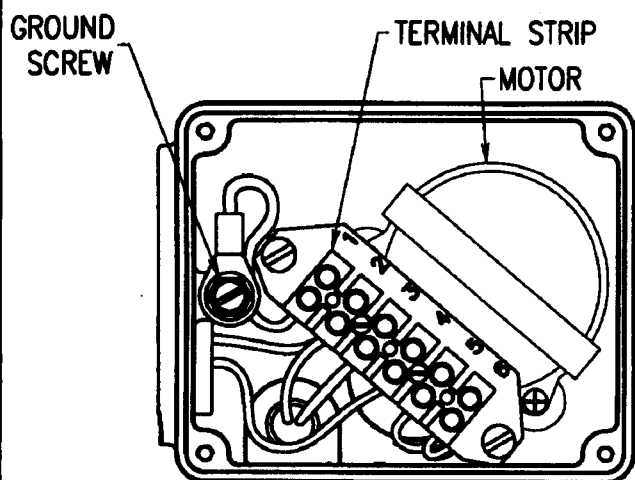
Liquid Level Switch

This lubricator is equipped with a liquid level switch. The switch will open an electrical circuit whenever the oil in the reservoir is **below** the minimum operating level. Thus, when connected to a monitoring circuit device, the liquid level can be monitored. (Switch not intended to power lamp or motor turn-off directly).

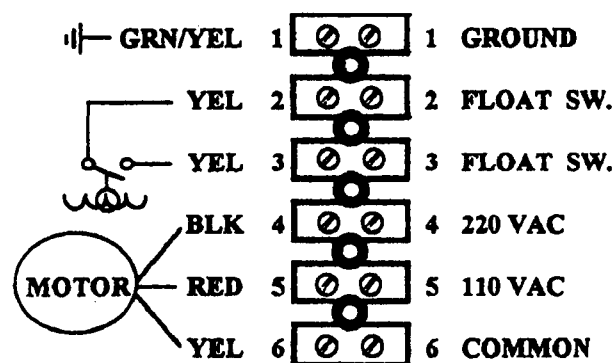
Maintenance

Check oil level daily and refill with approved oil.

REPLACE SYSTEM FILTER ANNUALLY OR AS FREQUENTLY AS NECESSARY.



View of electrical terminal strip (with top cover removed)



Wiring Diagram



Before performing service to lubricator, always turn off and disconnect electrical power.



Warning: When connecting lubricator, make sure that unit is securely and adequately grounded. Failure to ground properly may cause serious injury.

Bijur Lubricating Corporation

A Subsidiary of Vesper Corporation

Tel: 1-802-447-2174 • Toll Free: 1-800-631-0168 • Fax: 1-802-447-1365

Form No. 26394 (1/98)

