

Window Units

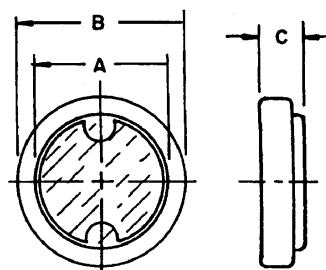
Flush Mounted, Glass Window

General

Window units are virtually flush-mounted. One piece construction features a corrosion resistant plated brass frame, holding a clear glass window, with an oil proof sealing gasket.

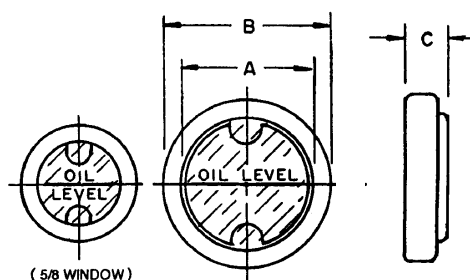
Standard Type

Used to indicate the level of non-corrosive liquid in reservoir. A clear window together with a reflecting background provides good visibility.



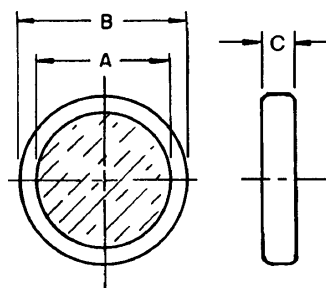
Level Type

Used to indicate a definite level of non-corrosive liquid in reservoir. Wording on the back of a clear window together with a reflecting background provides good visibility.



Open Type

Has no reflecting background, thus permitting observation of liquid flow or internal parts through a clear window.



A (I.D.)	B (O.D.)	C (Width)	Type	Part #
5/8"	7/8"	19/64"	Standard	B5184
			Level	B5944
			Open	B5602
1"	1 1/4"	11/32"	Standard	B5108
			Level	B5631
			Open	B5603
1 1/4"	1 1/2"	3/8"	Standard	B5145
			Level	B5734
			Open	B5604
1 3/4"	2"	3/8"	Standard	B5582
			Level	B5191
			Open	B5605

BIJUR DELIMON INTERNATIONAL

(919) 465 4448 LOCAL
(800) 631 0168 TOLL-FREE
(919) 465 0516 FAX

WWW.BIJURDELIMON.COM

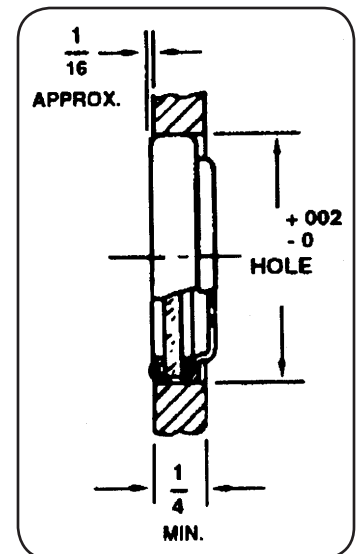
1 Copley Parkway, Suite 104
Morrisville, NC 27560

Installation

All units are pressed into a reamed hole in the wall of the reservoir. To ensure tightness, cover the surface of the hole with a thin coat of heat-resisting sealing material before pressing window unit into place. The maximum operating temperature is 180°F. Hole diameters according to window size are given below.

How to Order

When ordering, specify by name and part number, e.g. Window Unit, Standard Type, Part #B5184.



Mounting Arrangement

BIJUR DELIMON INTERNATIONAL

(919) 465 4448 LOCAL
(800) 631 0168 TOLL-FREE
(919) 465 0516 FAX

WWW.BIJURDELIMON.COM

1 Copley Parkway, Suite 104
Morrisville, NC 27560