

TECHNICAL DATA SHEET 2246

Lubricator L18P-R & L18P-L

Manual – One Shot

Operation: Lubricator is of the spring discharge type. It is operated by pushing the lever down, which raises the piston and compresses a spring. By releasing the lever, discharge of oil into the system is automatic. Discharge volume and pressure are independent of oil viscosity.

Reservoir Capacity: 1.5 liters

Lubricator Inlet Filter: 40 micron particle separation. It should be inspected periodically and cleaned or replaced as required.

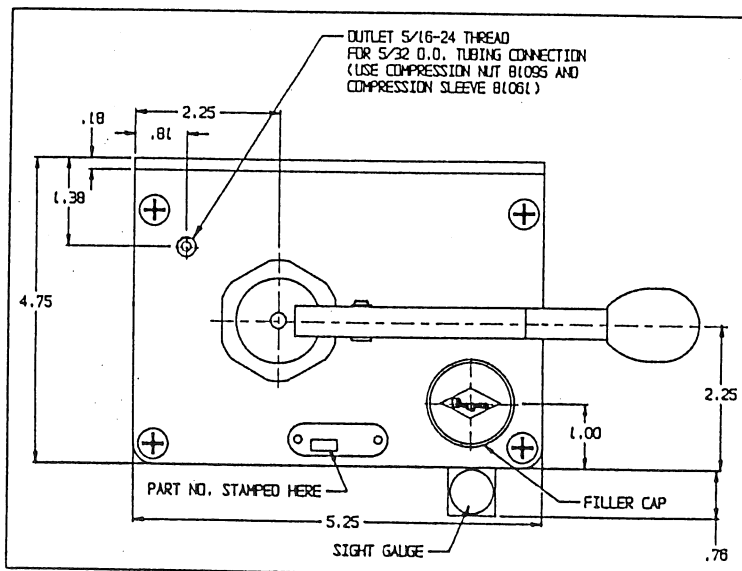
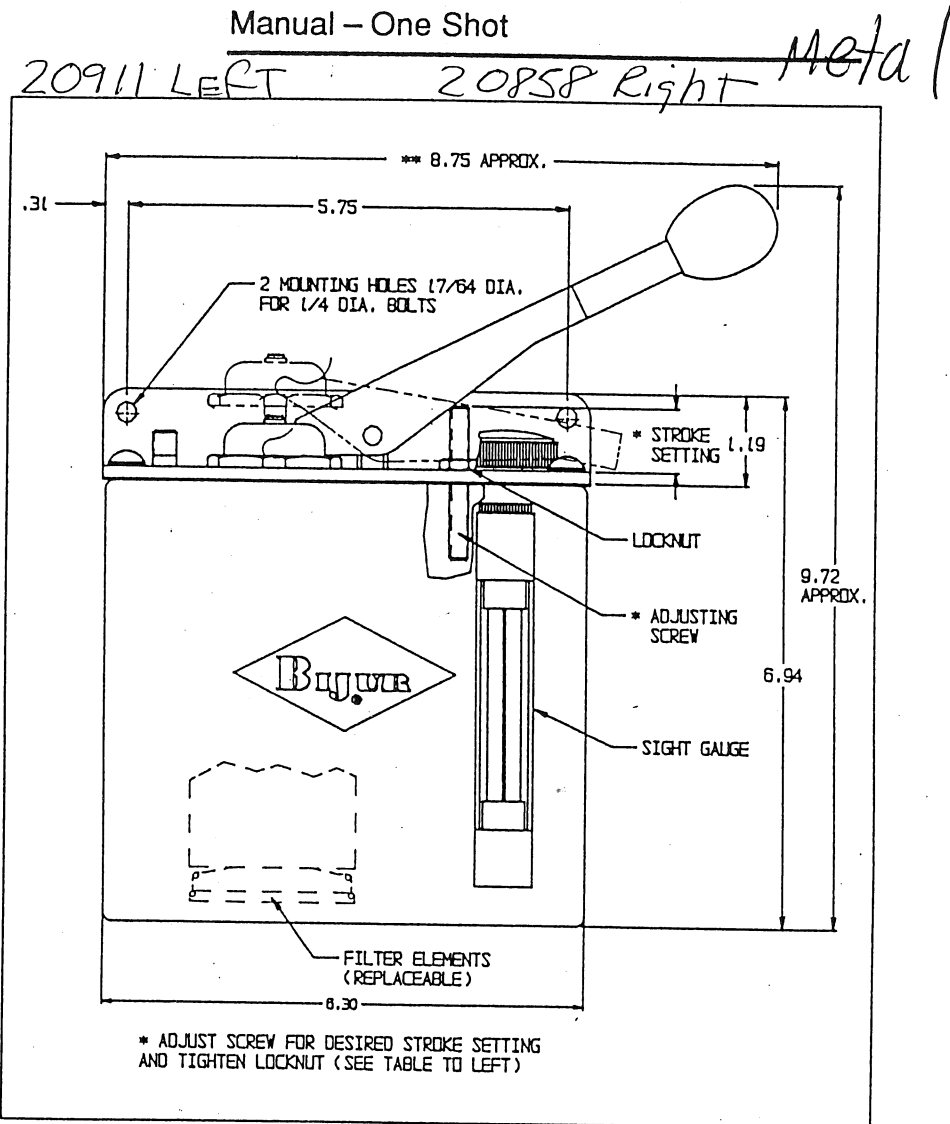
Discharge Pressure: 65 psi maximum. Discharge pressure will decrease as discharge volume decreases and the number of Meter Units increases.

Discharge Volume Per Stroke: 6 to 18ccs infinitely adjustable. Lubricator supplied set for 18cc discharge.

System & Limitations: Use Meter Units Type F. 70 Meter Units. System σ Limitation is given in table below. Do not exceed figure shown. To calculate system σ , refer to "Engineering Manual." Viscosity range is 150 to 8000 SSU at operating temperature.

When Ordering, Specify: Lubricator L18P-R with 1.5 liter metal reservoir, Part No. 20858 (right hand); Lubricator L18P-L, Part No. 20911 (left hand)

CC'S PER SHOT		6	9	12	15	18	Maximum Permissible Total System σ
STROKE SETTING		1-3/8	1-1/4	1-1/8	1	7/8	
Number of Meter Units	5						
	10						
	15	1750	2400	2900	3500	3400	
	20	1500	1800	2200	2600		
	25	1230	1450	1700	2000	2500	
	30	950	1150	1400	1700	2100	
	40	780	930	1100	1300	1600	
	50	640	770	920	1100	1400	
	60	570	680	810	960	1200	
	70	500	600	720	860	1080	
MAX. PERMISSIBLE TOTAL SYSTEM σ							



Illustrations and specifications are not binding in detail. Designs are subject to modification and improvement without notice.

Bijur Lubricating Corporation