

# KI Lubricator

## One-Shot

### General

The KI Lubricator one-shot lubricating system is pre-set by the machine manufacturer for best operation. These lubricators are spring discharge piston pumps mounted in a reservoir on the machine. Pulling out the tee handle to full stroke fills the cylinder with a pre-determined volume of oil. Spring pressure discharges the oil into the distribution system automatically and returns the handle to the original position. The lubricator must be operated at intervals recommended by machine manufacturer.

### Technical Data

Piston Diameter	.66"
Discharge	2.5cc-7.5cc per stroke
Average Discharge Pressure	60 psi
Piston Stroke Setting	0.5"-1.5"

### Startup Instructions

Fill reservoir; operate lubricator until oil flows freely at all bearings.

### Maintenance

Check oil level daily and refill reservoir when required. Check system periodically for loose or broken tubing, worn hoses, loose fittings and connections.

### Troubleshooting

Symptom	Possible Cause
Too little oil at all bearings.	Check for low oil level (handle snaps back if reservoir is empty), broken or cracked tubes, loose connections, flattened lubricator outlet tube, clogged filter or worn piston leather.



**ATTENTION**

Use clean oil only of the type and viscosity recommended by machine manufacturer.

**ATTENTION**

Replace filter group annually.

**BIJUR DELIMON INTERNATIONAL**

(919) 465 4448 LOCAL  
(800) 631 0168 TOLL-FREE  
(919) 465 0516 FAX

[WWW.BIJURDELIMON.COM](http://WWW.BIJURDELIMON.COM)

2250 Perimeter Park Dr., Suite 120  
Morrisville, NC 27560

## How to Order

Name	Description	Part #
KIB Lubricator	0.5" stroke	C1957-1
	1" stroke	C1957-2
	1.5" stroke	C1957-3
KIC Lubricator	0.5" stroke	C2367-1
	1" stroke	C2367-2

When ordering, specify name, description and part number, e.g. KIB, 1" stroke, Part #C1957-2.

## Service Parts

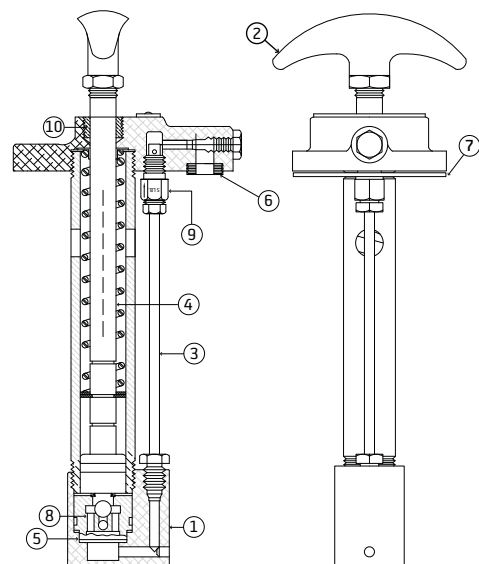
Item #	Description	Part #	Qty	Item #	Description	Part #	Qty
1	Cylinder Cap	17999	1	6	Seal Washer	B3482	1
2	Handle Assembly	S131	1	7	Gasket	B3943	1
3	Outlet Tube Assembly	B7018-5 (○)	1	8	Inlet Valve Assembly	B3626	1
		B7018-6 (★)	1	9	Check Valve	B3454	1
4	Piston Assembly	S134 (○)	1	10	Piston seal washer	A4198	2
		S135 (★)	1	11	Plug (not shown)	B4026	1
5	Filter Assembly	S136	1				

○ = KIB Lubricator  
★ = KIC Lubricator

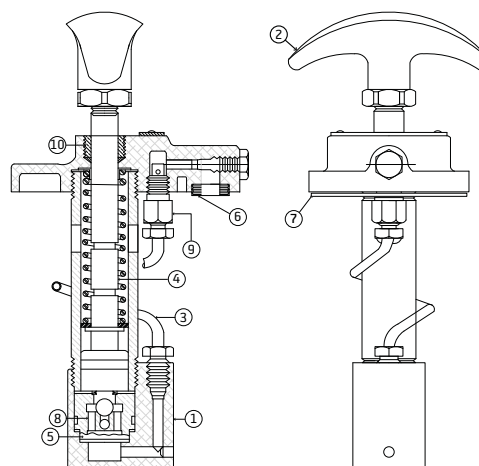
NOTE:

The previous style KI lubricator used two Leather cup seals on the piston.  
If you have this style pump, request data sheet # K-1 from customer service.

### KIB



### KIC



BIJUR DELIMON INTERNATIONAL

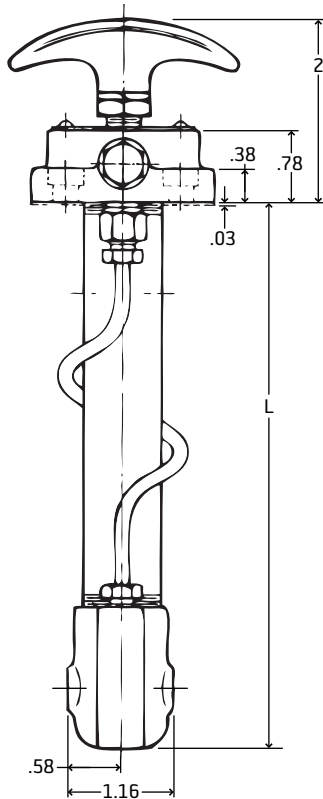
(919) 465 4448 LOCAL  
(800) 631 0168 TOLL-FREE  
(919) 465 0516 FAX

[WWW.BIJURDELIMON.COM](http://WWW.BIJURDELIMON.COM)

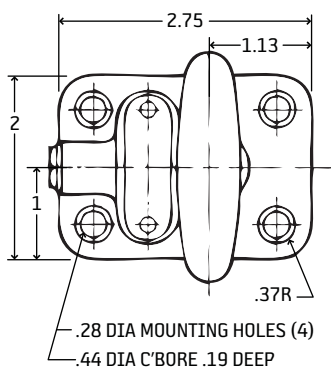
2250 Perimeter Park Dr., Suite 120  
Morrisville, NC 27560

## Dimensional Schematics

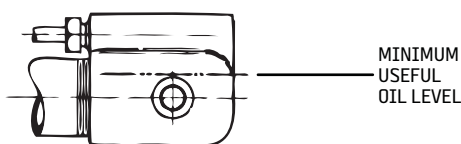
Front View



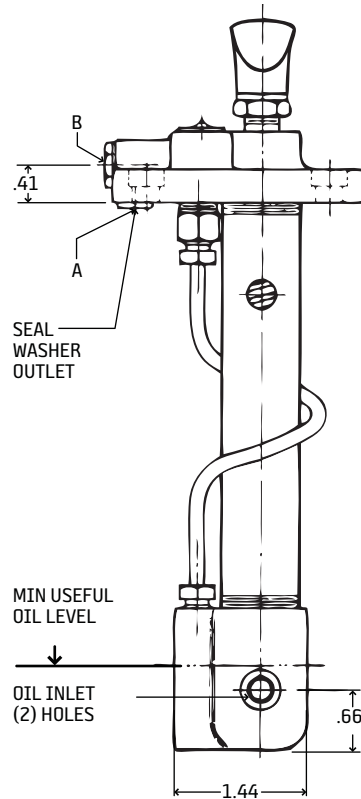
Top View



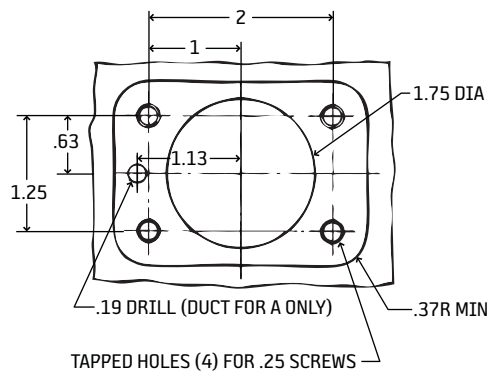
Oil Inlet Holes (Horizontal)



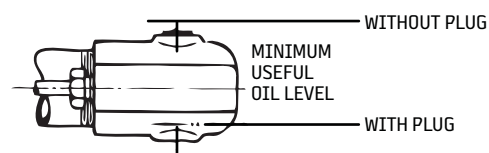
Side View



Reservoir



Oil Inlet Holes (Vertical)



Measurements shown in inches.

### ATTENTION

#### \* Alternative Oil Outlets:

A- Thru drilled passage in machine.

B- With plug removed tapped hole is 5/16-24 thread for 5/32 O.D. tubing connection. Use compression bushing (part #B1371) and compression sleeve (part #B1061).

For maximum useful oil capacity of reservoir, plug upper inlet hole with plug B4026 (Supplied with lubricator).

"L" dimensions:

KIB 6" KIC 4"

BIJUR DELIMON INTERNATIONAL

(919) 465 4448 LOCAL  
(800) 631 0168 TOLL-FREE  
(919) 465 0516 FAX

[WWW.BIJURDELIMON.COM](http://WWW.BIJURDELIMON.COM)

2250 Perimeter Park Dr., Suite 120  
Morrisville, NC 27560