



TM-1 Lubricator

with a 4 liter reservoir

Operation

A motor-driven spring discharge pump, the motor incorporates a gear reduction which determines the operating cycle time of the piston.

Application

Typically, the TM-1 Automatic Cyclic Lubricator utilizes single line metering (resistance) devices. The lubricator is also ideally suited to deliver precise amounts of oil to various types of friction points.

Discharge pressure range

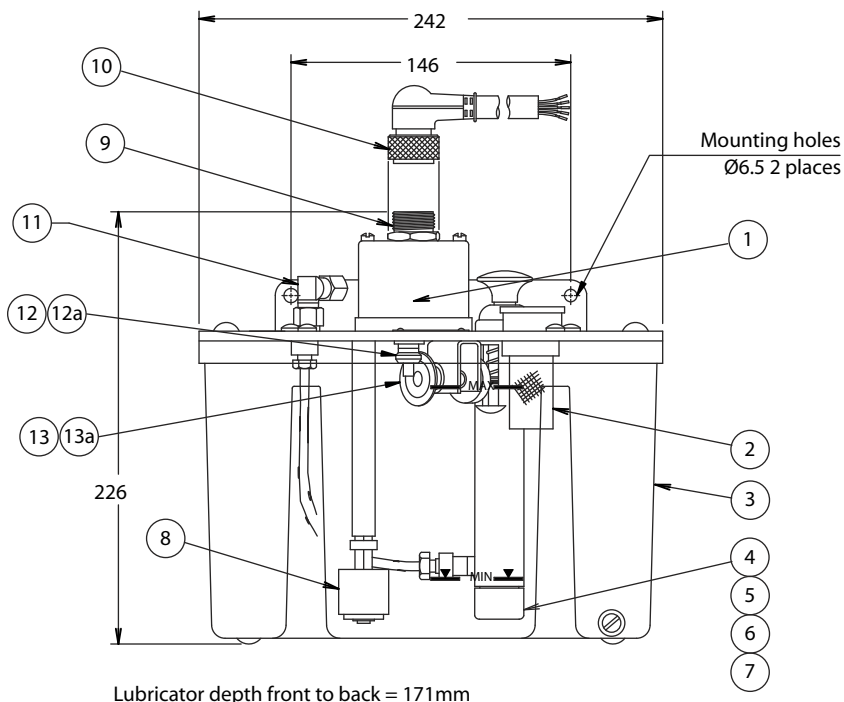
Output discharge pressure depends on the characteristics of the lubrication distribution system. When metering resistance devices are incorporated in the single line discharge system, typical pressure ranges between 20-50 PSI (1.4 - 3.5 bar). Applications utilizing only a single discharge line develop only marginal pressures.

Service parts

Normal recommended service parts are listed below.

Other technical data

Discharge cycle time	12 second intervals
Reservoir capacity	4.0 liter (fill) 3.7 liter (useable)
Discharge volume per cycle (adjustable)	0.2cc minimum 1.0cc maximum (set at maximum discharge)
Lubricator inlet filter	40 micron separation
Liquid level switch	Standard (normally open)
Oil viscosity range	150 to 8000 SSU (35 to 1750 cSt) at operating temperature



Item	P/N	Description
1	26948	Motor
2	19030	Filter screen
3	20663-kit	Reservoir
4	B4202C	Filter housing
5	B4203C	Filter disc
6	B4204C	Filter screen
7	B4205C	Filter support
8	28639	Leve; swotch assembly
9	26934	5-pin connector
10	34157	Cable assembly (supplied loose)
11	B6536	Outlet adapter for 1/4" tubing
12	B7824	Bevel gear
12a	HS209	Set screw
13	B7823	Bevel gear
13a	HS210	Set screw

Discharge volume per stroke cycle

Lubricant delivery per stroke is 1.0cc maximum. Output is adjustable from 1.0cc to 0.2cc minimum.

IMPORTANT: Do not set minimum stroke output below 0.2cc. Refer to stroke setting table at right.

Lubricator is supplied set at maximum delivery stroke.

To decrease oil delivery, follow steps below:

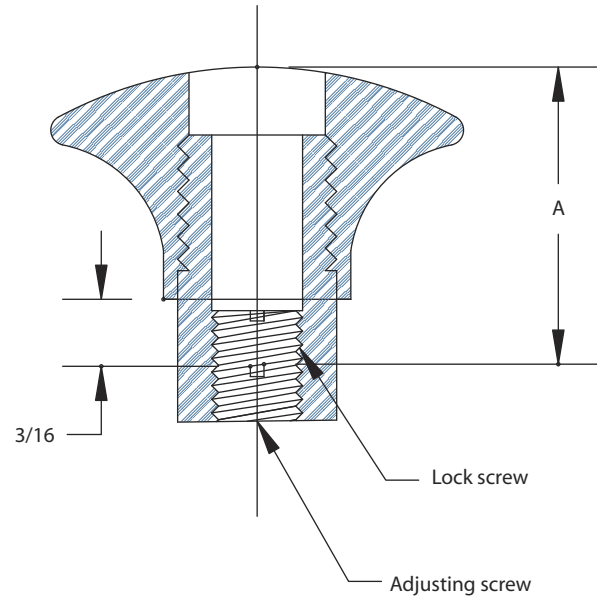
- Remove lock screw by turning counter-clockwise.
- Measure dimension "A" before making adjustment.
- Turn adjusting screw clockwise to increase screw depth. (Refer to table at right)
- After desired setting is achieved, install and tighten lock screw.

NOTE: It is recommended that actual delivery be measured for circumstances requiring a precise amount of lubricant.

Motor

Continuous duty, single phase, synchronous induction timing motor for 50/60 Hz, single phase, 110 volts.

POWER CONSUMPTION: 3 watts



Increase dimension A to obtain discharge on right

Increase dimension A to obtain discharge on right		Discharge
Inches	MM	cc/cycle
0	0	1.0cc
.100	2.8	.8cc
.220	5.6	.6cc
.330	8.4	.4cc
.440	11.2	.2cc

Stroke setting table. This table to be used as a guide only.

Liquid level switch

Lubricator is equipped with a low level switch. Switch is supplied so that the switch will open an electrical circuit whenever the oil in the reservoir is below the minimum operating level. When connected to a light or other indicating device, the reservoir liquid level can be monitored.

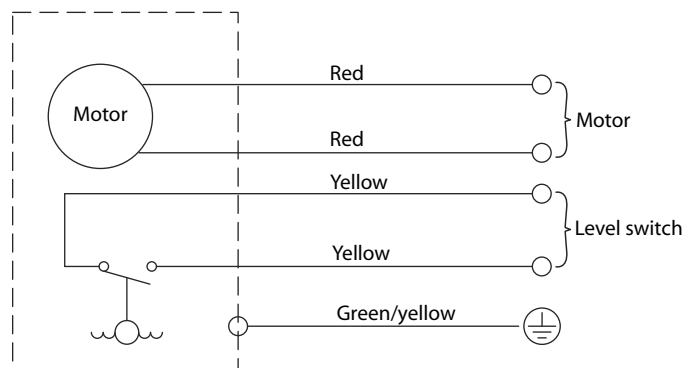
Customers may reverse the switch operation when desired by inverting the float. The switch will then close an electrical circuit whenever oil is below the minimum oil level.

SWITCH CONTACT RATING: 10 watts maximum

When ordering, specify

Name, symbol, description and part number, such as:

Lubricator TM-1 with 4 liter reservoir, part no. 36158.



Important safety instructions

This unit is connected to a grounded metal permanent wiring system. If this unit is shipped disassembled, clear assembly and adjustment instructions shall be provided with the unit.

In operation of this unit, please ensure to:

- **KEEP GUARDS IN PLACE** and in working order
- **REMOVE ADJUSTING KEYS AND WRENCHES.** Form habit of checking to see that keys and adjusting wrenches are removed from the unit before it is turned on.
- **KEEP WORK AREA CLEAN.** Cluttered areas and benches invite accidents.
- **DON'T USE IN DANGEROUS ENVIRONMENT.** Ensure the work area is well lighted and don't expose the unit to dangerous environments.
- **WEAR PROPER APPAREL.** Do not wear loose clothing, gloves, neckties, rings, bracelets or other jewelry which may get caught in moving parts.
- **DISCONNECT TOOLS** before servicing or when changing accessories. Ensure to use recommended accessories.
- **CHECK FOR DAMAGED PARTS.** Before further use of the unit, a guard or other part that is damaged should be carefully checked to determine that it will operate properly and perform its intended function - check for alignment of moving parts, mounting, and any other conditions that may affect its operation. A guard or other part that is damaged should be properly repaired or replaced.
- In the event of the motor being mounted, connected or reconnected, please ensure the unit is disconnected from the power supply.

Save these instructions

BIJUR LUBRICATING MODEL 36158

Motor

Rated voltage - 110V
 Frequency - 50/60 Hz
 Rated current - 30 mA
 Rated power - 3W

Switch

Volts - 24VDC maximum
 Current - 0.5A maximum



WARNING to reduce the risk of shock or injury, disconnect all electrical supplies to the tool prior to servicing.

WARNING for your own safety read instruction manual before operating tool — wear eye protection.

34213
r3 04-05



Bijur Lubricating Corporation
 808 Aviation Pkwy, Suite 1400
 Morrisville, NC 27560
 1-800-631-0168
bijur.com