

# Reversible Gear Pump

## Rotary Drive, Oil

### General

Reversible gear pumps are designed to be driven from a rotating shaft whose direction of drive reverses during the operation of the machine. The pump contains a piston type reversing valve which automatically compensates for a change in the direction of drive. Thus, the inlet and outlet ports of the pump remain the same for either left or right hand rotation of the drive shaft.

### Technical Data

Drive Speed	20 rpm minimum to 500 rpm maximum (Part #C2425)
	20 rpm minimum to 1000 rpm maximum (Part #C2478)
Discharge Rate	Approximately 50cc per minute per 100 rpm
Discharge Pressure	150 psi maximum

### How to Order

Name	Description	Part #
Reversible Gear Pump	Sump mounting	C2425
	Sealed, external mounting	C2478

When ordering, specify by name, description and part number, e.g. Reversible gear pump, sump mounting, Part #C2425.



#### BIJUR DELIMON INTERNATIONAL

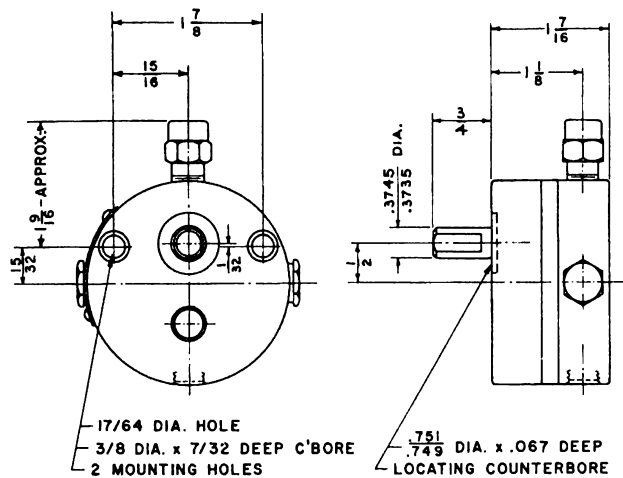
(919) 465 4448 LOCAL  
(800) 631 0168 TOLL-FREE  
(919) 465 0516 FAX

[WWW.BIJURDELIMON.COM](http://WWW.BIJURDELIMON.COM)

2100 Gateway Centre Blvd., Suite 109  
Morrisville, NC 27560

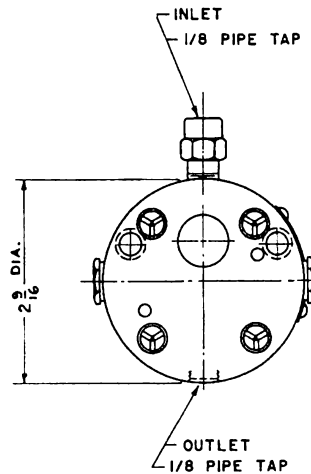
## Dimensional Schematics

### Sump Mounting (#C2425)

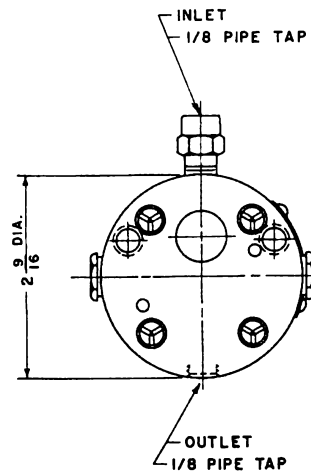
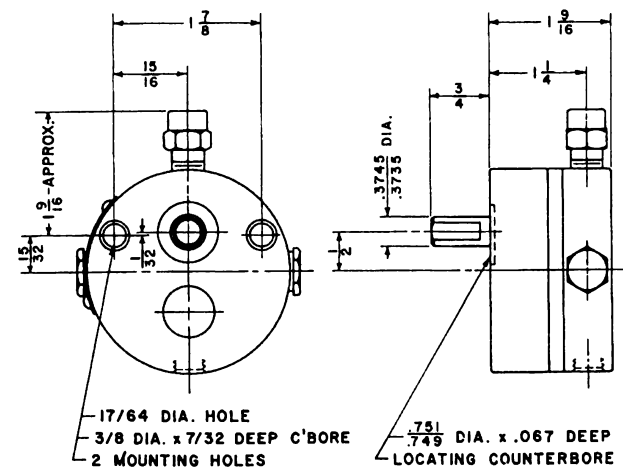


Measurements shown in inches.

\* Inlet tubing size:  $\frac{1}{4}$ " O.D. maximum.  
Suction head: 6 inches maximum.



### Sealed, External Mounting (#C2478)



BIJUR DELIMON INTERNATIONAL

(919) 465 4448 LOCAL  
(800) 631 0168 TOLL-FREE  
(919) 465 0516 FAX

[WWW.BIJURDELIMON.COM](http://WWW.BIJURDELIMON.COM)

2100 Gateway Centre Blvd., Suite 109  
Morrisville, NC 27560