

SK-505 Lubricator

Motor-driven, Semi-fluid Greases



General

The SK-505 lubricator is a piston discharge pump activated by a small direct current 24 Volt(DC) electric motor. SK-505 Model B has a discharge pressure of 2100 psi.

Application

This model is normally used with progressive divider blocks for small and medium sized systems (refer to *Brochure #166 - Progressive Lubricating Systems*). The outlet port has a 1/4" BSPP thread for use with inverse flare fittings. Use adapter #20331 and seal #35010 to adapt to 1/8" NPT female threads.



Technical Data

Lubricant	NLGI 000, 00 and 0
Reservoir	Clear plastic with follower plate
Reservoir Capacity	0.4 liter (400cc), 1.0 liter (1000cc)
"ON" Time (max.)	5 minutes
"OFF" Time (min.)	5 minutes
Pump Output	Approx. 13cc/min at 0 psi; Approx. 6cc/min at 2100 psi (150 kg/cm ²)
Motor Current	No Load = 0.8 amps, Stalled \leq 3.0 A
Temperature Range	30° - 100°F (-1° - 38°C)

BIJUR DELIMON INTERNATIONAL

(919) 465 4448 LOCAL
(800) 631 0168 TOLL-FREE
(919) 465 0516 FAX

WWW.BIJURDELIMON.COM

1 Copley Parkway, Suite 104
Morrisville, NC 27560

Operation

Filling Grease Reservoir

Do not fill from top – always fill reservoir with clean grease through the standard zerk grease fitting located in lower housing. This action minimizes introduction of air pockets into lubricator and centralized distribution system.

How To Order

Various pump assemblies, specifications and reservoirs are shown below. Construct the ordering designation for the SK-505 lubricator you require by inserting the individual codes for the required parts. Refer to example of ordering sequence shown below:

Example: Part number 505-BE would represent a 24 VDC, 2100 psi lubricator assembly complete with a 1 liter reservoir for use with grease not exceeding NLGI No. 0.

Service Parts

Description	Part #
<div style="display: flex; align-items: center; justify-content: center;"> <div style="text-align: right; margin-right: 10px;">505 -</div> <div style="display: flex; gap: 10px;"> <div style="border: 1px solid blue; width: 30px; height: 30px; display: flex; align-items: center; justify-content: center;"> Pump assembly </div> <div style="border: 1px solid green; width: 30px; height: 30px; display: flex; align-items: center; justify-content: center;"> Reservoir assembly </div> </div> </div> <div style="display: flex; justify-content: space-around; margin-top: 10px;"> <div style="text-align: left;"> <p>B- Standard Pressure, 24 VDC, 2100 psi</p> </div> <div style="text-align: left;"> <p>B- 0.4 liter (400cc), Grade 0, 00, & 000 grease E- 1 liter (1000cc), Grade 0, 00, & 000 grease</p> </div> </div>	

Reservoir B	44283500
Reservoir E	44278900
Pump/Motor Assembly	44990700
Zerk fitting	19448

BIJUR DELIMON INTERNATIONAL

(919) 465 4448 LOCAL
(800) 631 0168 TOLL-FREE
(919) 465 0516 FAX

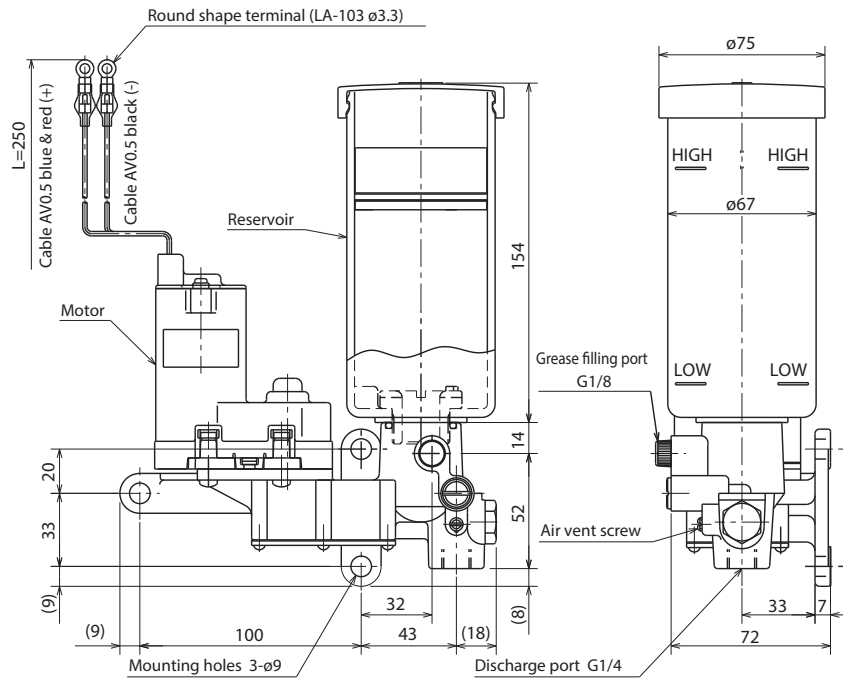
WWW.BIJURDELIMON.COM

1 Copley Parkway, Suite 104
Morrisville, NC 27560

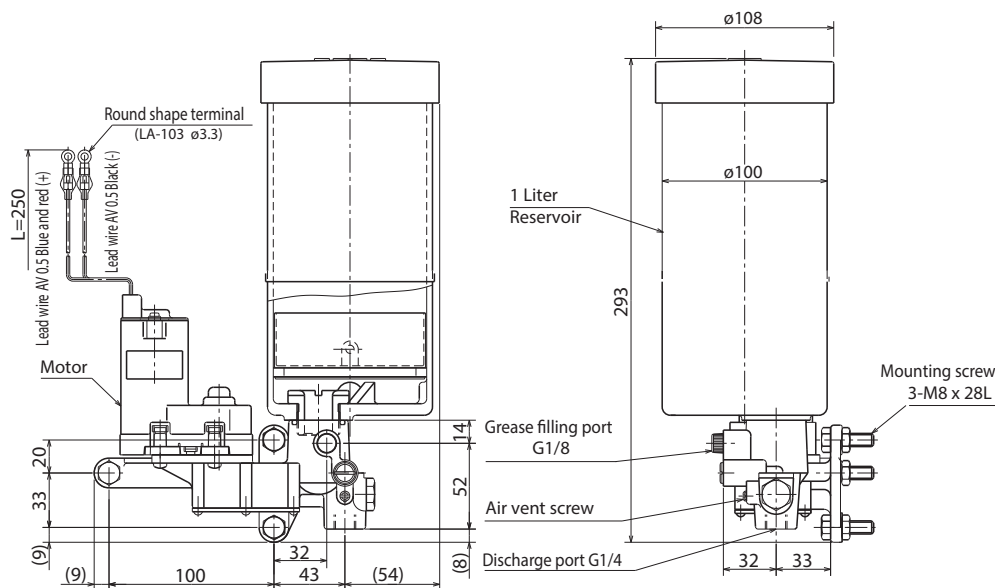
Dimensional Schematics

0.4 Liter (400cc) Reservoir

Measurements shown in millimeters.



1.0 Liter (1000cc) Reservoir



BIJUR DELIMON INTERNATIONAL

(919) 465 4448 LOCAL
(800) 631 0168 TOLL-FREE
(919) 465 0516 FAX

WWW.BIJURDELIMON.COM

1 Copley Parkway, Suite 104
Morrisville, NC 27560