

Reservoir – 5 Gallon

For Lubricator Type V

General

Reservoirs with a 5-gallon capacity are available complete with cover and gasket for use with V5W lubricator units. Reservoirs are available with a settling chamber for use in return systems, with a float switch for use in non-return systems and without either.

Wiring

Reservoir D3030 is the same as D3031 except the settling chamber is replaced by a three wire float switch. In both extreme angular positions one circuit is closed and the other circuit is open. In a mean, or horizontal position, both circuits are closed. Thus it is possible through different wire combinations to use this switch for actuating various signal or control circuits. Examples of several possibilities and the wiring instructions for each are given below:

1. To actuate a warning signal (light, bell, buzzer, etc.) when the reservoir requires refilling.

This warning signal will stay "on" until the reservoir is refilled after which it will turn "off" automatically.

Wiring: Connect terminals 2 and 3 to the signal line circuit.

2. To actuate a safe running signal (green light) indicating an adequate oil supply to assure proper lubrication of the machine and to actuate a warning signal (red light, bell, buzzer, etc.) when this supply "nears" the minimum allowable level. If this warning signal is ignored, the safe running signal circuit will open when the minimum allowable level is reached but the warning signal circuit will remain closed until the reservoir is refilled. Refilling of the reservoir will automatically close the safe running signal circuit and open the warning signal circuit.

Wiring: Connect terminals 1 and 2 to the safe running signal circuit and 2 and 3 to the warning signal circuit.

3. To actuate a warning signal (red light, bell, buzzer, etc.) when the reservoir supply "nears" the minimum allowable level and to stop the machine if this warning is ignored and the supply drops to the actual minimum allowable level. The machine can be restarted and the warning signal will turn off automatically only after the reservoir is refilled.

Wiring: Connect terminals 2 and 3 to the warning signal circuit, and terminals 1 and 2 to the machine's control circuit.

4. To stop a machine automatically when the reservoir requires refilling. The machine can be restarted only after the reservoir has been refilled.

Wiring: Connect terminals 1 and 2 to the machine's control circuit.

Note: This same wiring can be used to have a safe running signal (green light) which is normally "on" go "off" to indicate the need for refilling the reservoir.

Switch Rating

Non-inductive Resistance Amperes		Motor Horsepower	
		Repulsion Induction	Split Phase and DC
115 VAC	230 VAC	115/230 VAC	115/230 VAC
8 amps	4 amps	1/2 hp	1/6 hp



BIJUR DELIMON INTERNATIONAL

(919) 465 4448 LOCAL
(800) 631 0168 TOLL-FREE
(919) 465 0516 FAX

WWW.BIJURDELIMON.COM

2250 Perimeter Park Dr., Suite 120
Morrisville, NC 27560

Settling Chamber

The settling chamber has two alternate return ports and the reservoir fill port. All oil that enters the reservoir goes through a 120 mesh settling screen. This insures long filter life for the lubricator suction filter. The settling chamber screen is serviceable without disconnecting pump, tubing or wiring.

How to Order

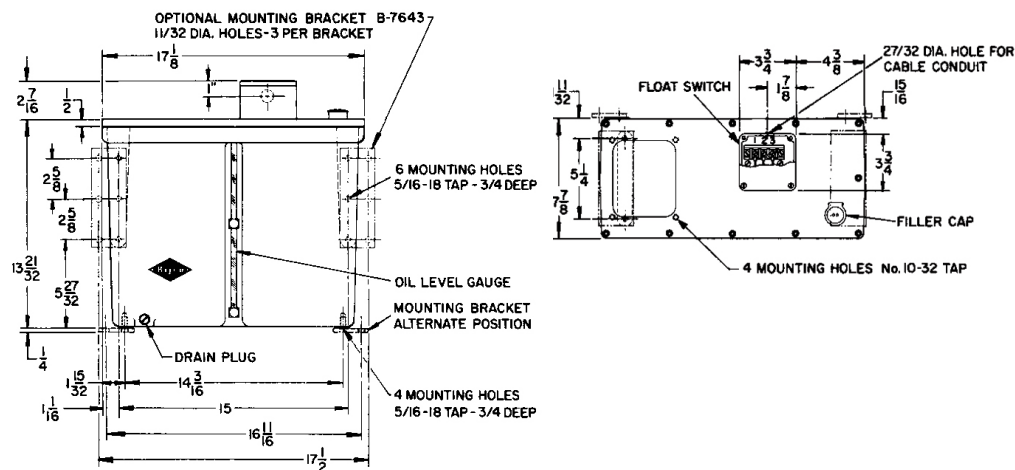
Name	System Type	Float Switch	Settling Chamber	Part #
5 Gallon Reservoir	Non-return	YES	NO	D3030*
	Return	NO	YES	D3031*
	Non-return	NO	NO	D3050

**The cover of these reservoirs can be rotated 180° for an alternate lubricator unit position.*

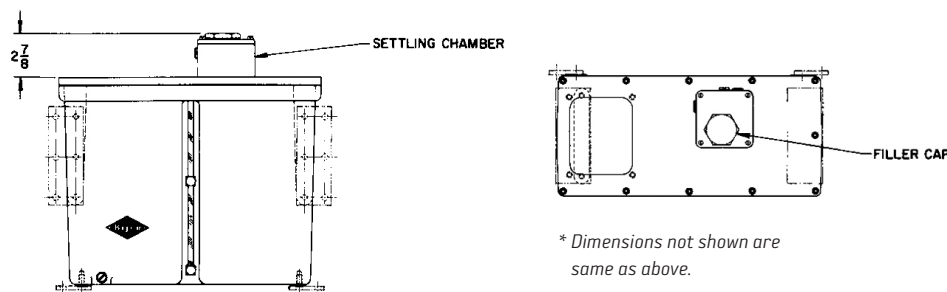
When ordering specify name and part number such as: 5 gallon reservoir with float switch, Part #D3030.

Dimensional Schematics

5 Gallon Reservoir w/ Float Switch (D3030)



5 Gallon Reservoir w/ Settling Chamber (D3031)*



BIJUR DELIMON INTERNATIONAL

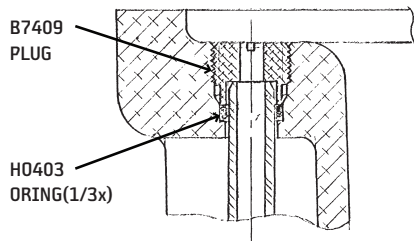
(919) 465 4448 LOCAL
(800) 631 0168 TOLL-FREE
(919) 465 0516 FAX

WWW.BIJURDELIMON.COM

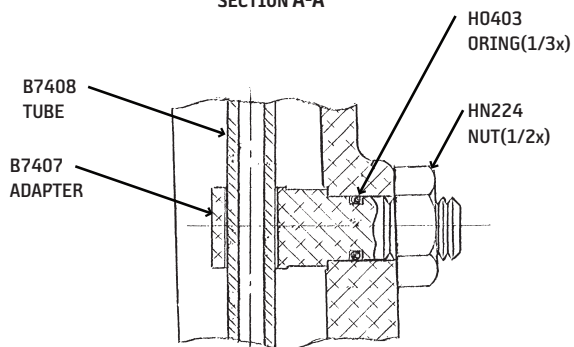
2250 Perimeter Park Dr., Suite 120
Morrisville, NC 27560

Service Parts

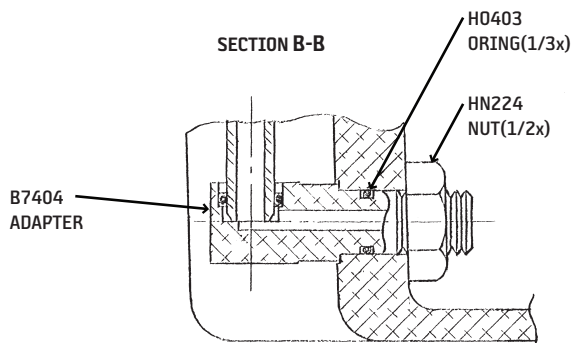
Sight Glass



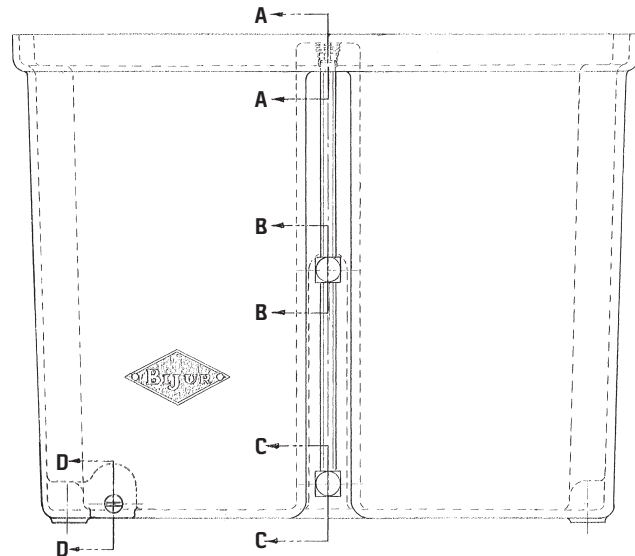
SECTION A-A



SECTION B-B

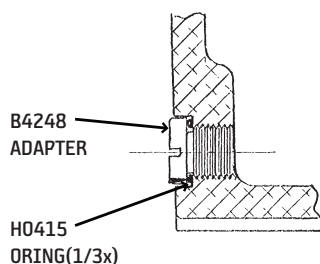


SECTION C-C



RESERVOIR	FILL CAP
D3030	B9230C
D3031	B9842
D3050	HF705C

Drain Plug



SECTION D-D

BIJUR DELIMON INTERNATIONAL

(919) 465 4448 LOCAL
(800) 631 0168 TOLL-FREE
(919) 465 0516 FAX

WWW.BIJURDELIMON.COM

2250 Perimeter Park Dr., Suite 120
Morrisville, NC 27560