

AirMax

Pneumatic Pump

Operation

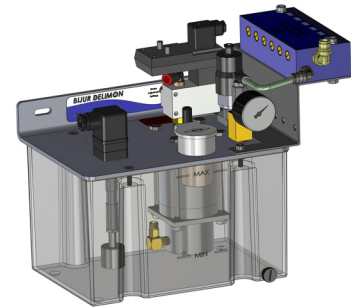
The AirMax is a simple economical lubricator, ideally suitable for air-oil systems. The AirMax is supplied with a 4 liter reservoir, pressure gauge, low level switch and oil inlet filter with the options of a oil pressure switch, solenoid valve and timer.

The AirMax comes complete with a pumping unit and a integrated air-oil injection system. The required number of oil injectors and the delivery on each port can be selected from the smart number.

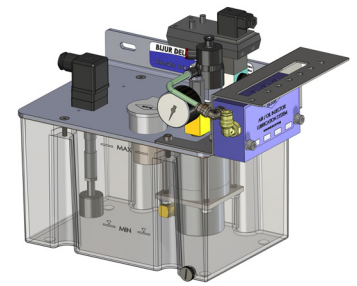
The AirMax includes an air actuated, spring return piston pump. The inlet air pressure supply to the pumping element determines the output oil pressure. When used with positive displacement injectors (PDI) the minimum oil pressure should be 260 PSI (18 bar).

For extended service, incoming air must be dry. Always use a suitable FRL unit (filter/regulator lubricator) to control the inlet air supply to the pumping unit (set air to recommended operating pressure). The AirMax pumping unit is cycled using a 3/2-way solenoid valve (Typical cycle; 5 seconds "on" and 30-300 seconds "off").

A continuous air supply is required to the air-oil injection block and it should be separately regulated to control the air-oil flow rate to the lube point.



AirMax pump w/horizontal air/oil block



AirMax pump w/vertical air/oil block

Technical Data

Air Inlet pressure (PDI)	(Minimum)	87 psi (6 bar)
	(Maximum)	125 psi (8.6 bar)
Air inlet Port (Pumping Unit)		1/8 NPT
Oil Pressure (Minimum Oil Pressure, PDI)		260 psi (18 bar)
Delivery Volume		0.01cc, 0.025cc or 0.06cc per outlet
Number of Air-Oil Outlets		1-6 Outlets
Air Inlet Port (Air-Oil Block)		5/16"(8mm) tubing
Outlet Port (Air-Oil Block)		M8X1.0
Viscosity Range		10-220 cSt (must be 10cSt/60SUS @ 100°F)
Operating Temperature		32°F to 120° F (-0°C to 49° C)
Reservoir		4 Liter Plastic
Pressure Gauge		0-580 psi (0-40 bar)
Pressure Switch		203 psi N.O. (14 bar)
Low Level Switch		Magnet, single position. N/O or N/C contact with DIN43650
Low Level Switch Rating		Max 50W
Solenoid Voltage		24VDC 125VAC 230VAC
Timer (to cycle air solenoid)		Optional , 24VDC or 125-230VAC

Refer to the following datasheet for
Airmatic operation:

+ Datasheet #20349:
Airmatic Lubricator

BIJUR DELIMON INTERNATIONAL

(919) 465 4448 LOCAL
(800) 631 0168 TOLL-FREE
(919) 465 0516 FAX

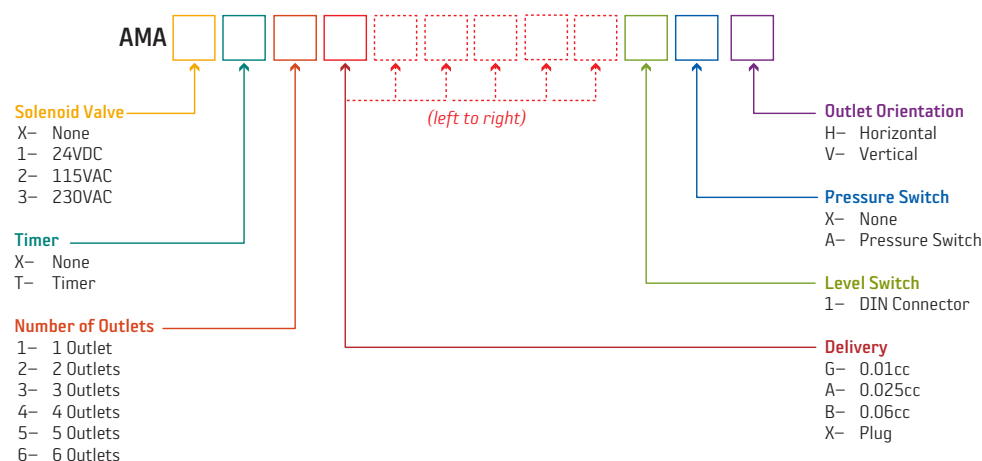
WWW.BIJURDELIMON.COM

1 Copley Parkway, Suite 104
Morrisville, NC 27560

AirMax

Pneumatic Pump

How to Order



Timer shown above fits onto the DIN (Form A) connector on the solenoid valve on the Pumping Unit.

Example: To order a AirMax with 2 outlets with 0.025cc delivery, 115VAC Solenoid & Timer, Low Level Switch w/DIN, order using part #AMA2T2AA1XH.

Accessories

Description	Part #
Filter Regulator 1/4"NPT with Gauge	60193-5
Filter Regulator 1/4"BSPP with Gauge	60193-2
AV PTC str outlet fitting x 4mm tube	AR5076
AV PTC 90° outlet fitting x 4mm tube	AR2121
AV PTC str outlet fitting x 6mm tube	AR5016
AV PTC 90° outlet fitting x 6mm tube	AR2112
Lube point str fitting PTC 4mm x 1/8NPT	20101-1
Lube point 90° fitting PTC 4mm x 1/8NPT	15920-1
Lube point str fitting PTC 4mm x 1/8BSPT	35261
Lube point 90° fitting PTC 4mm x 1/8BSPT	AR1986
Lube point str fitting PTC 6mm x 1/8NPT	20101-6
Lube point 90° fitting PTC 6mm x 1/8NPT	32179-1
Lube point str fitting PTC 6mm x 1/8BSPT	21459-2
Lube point 90° fitting PTC 6mm x 1/8BSPT	AR1980
4mm o.d. x 2.5mm i.d. clear polyurethane tubing	4N25W
6mm o.d. x 4mm i.d. clear polyurethane tubing	8N31T



Refer to the following catalog for additional fitting options:

+ Catalog #151:
Fittings & Accessories Catalog

BIJUR DELIMON INTERNATIONAL

(919) 465 4448 LOCAL
(800) 631 0168 TOLL-FREE
(919) 465 0516 FAX

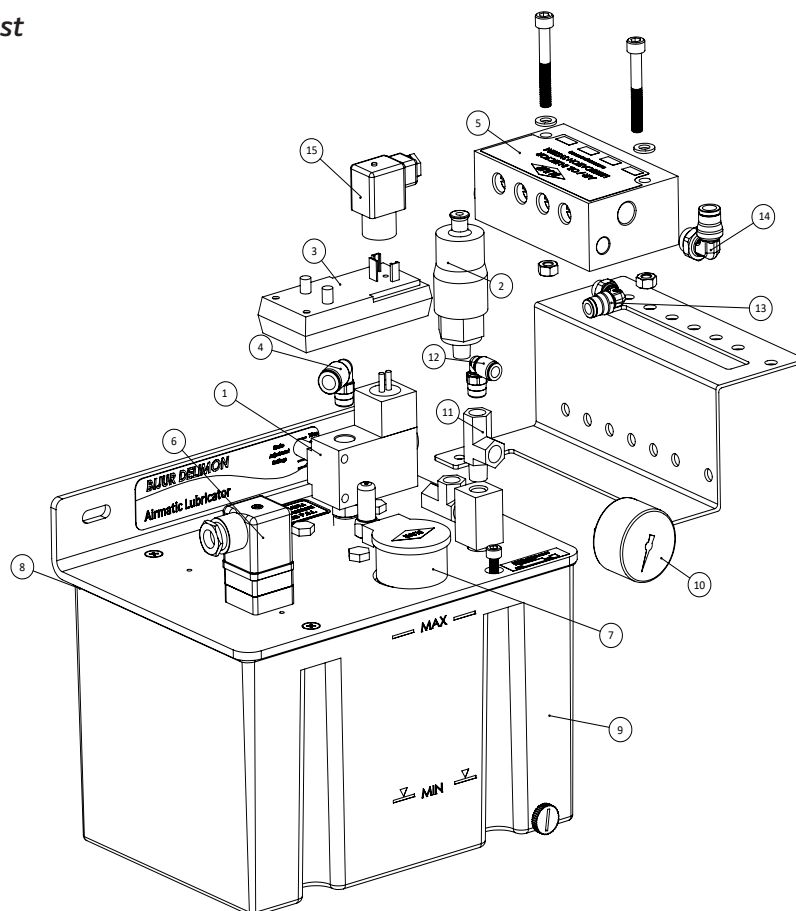
WWW.BIJURDELIMON.COM

1 Copley Parkway, Suite 104
Morrisville, NC 27560

AirMax

Pneumatic Pump

Parts List



Item	Description		Part #
1	Solenoid valve	115vac	20311-3
		230vac	20311-4
		24vdc	20311-7
2	Pressure switch		AC179
3	Timer		29927
4	PTC fitting solenoid valve		15920-2
5	AV Air/oil block - replacement injectors	0.01cc	26903-01
		0.025cc	24209-025
		0.06cc	24209-06
6	Low level switch w/DIN connector		72169
7	Fill cap		32114
	Strainer (not shown)		32116-1
8	Reservoir gasket		22240
9	Reservoir		20663-KIT
10	Pressure gauge		23814
11	Male run tee (X2)		26978
12	PTC fitting pump outlet oil		29292
13	PTC fitting AV block oil inlet		AR2015
14	PTC fitting AV block air inlet		AR2091
15	DIN connector		MCC2510A
16	Pump filter kit (not shown)		A0293

Refer to the following tech sheet for injector replacement:

+ Datasheet #TS010:
Air/Oil Injector replacement

BIJUR DELIMON INTERNATIONAL

(919) 465 4448 LOCAL
(800) 631 0168 TOLL-FREE
(919) 465 0516 FAX

WWW.BIJURDELIMON.COM

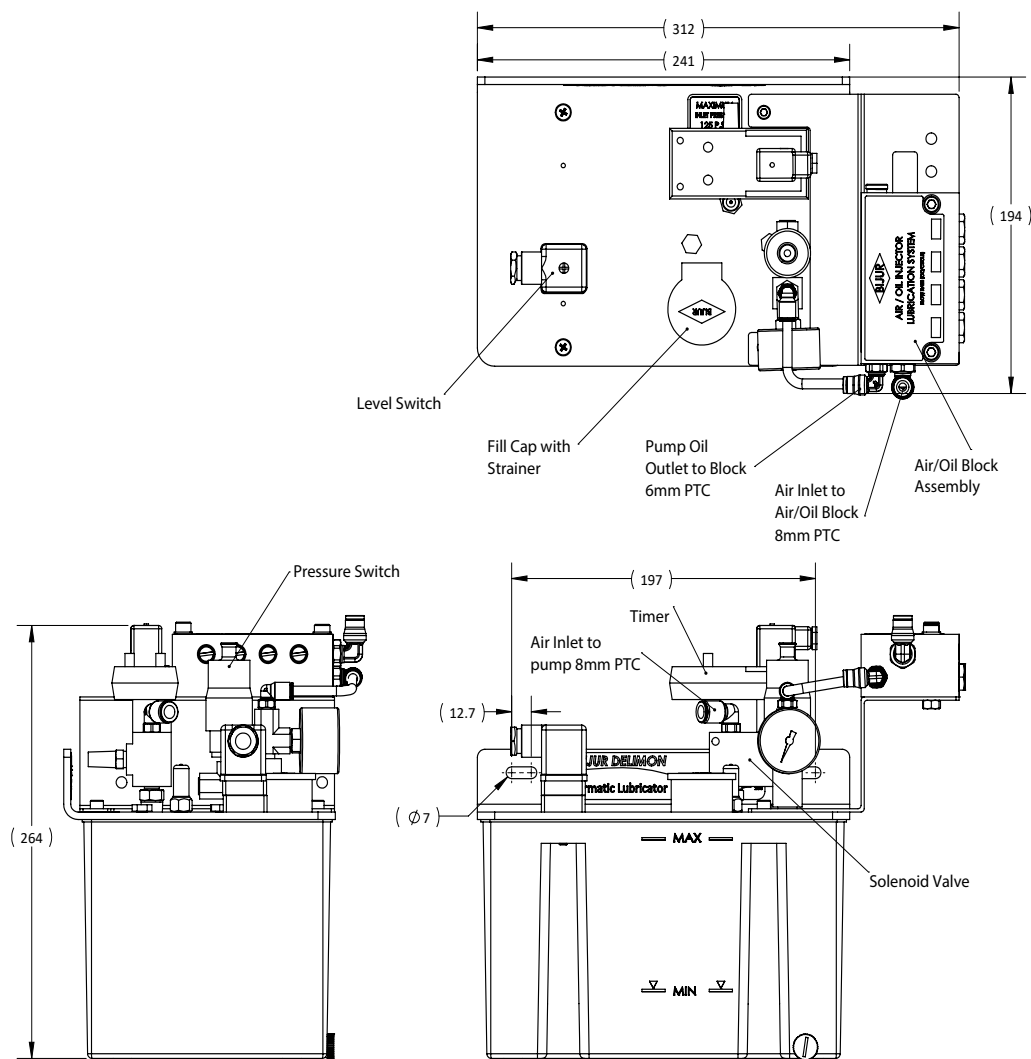
1 Copley Parkway, Suite 104
Morrisville, NC 27560

Airmax

Pneumatic Pump

Dimensions & Overview

4 outlet version shown.



BIJUR DELIMON INTERNATIONAL

(919) 465 4448 LOCAL
(800) 631 0168 TOLL-FREE
(919) 465 0516 FAX

WWW.BIJURDELIMON.COM

1 Copley Parkway, Suite 104
Morrisville, NC 27560