

V5B Lubricator

Automatic Continuous

Operation

The V5B Lubricator consists of a motor-driven gear pump with a controlled constant volume discharge. The fully automatic lubricating system is preset by the machine manufacturer for best operation. Discharge volume may be adjusted by turning the bypass valve counter-clockwise to reduce the pressure and thus automatically reduce the amount of oil, or by closing valve to increase pressure and oil flow.

Technical Data

Motor	1/20 hp, NEMA Frame L330, totally enclosed, non-ventilated*
Voltage	115 VAC
Frequency	60/50 Hz
Speed	1670/1370 rpm
Start Amperage	2.3/2.5 amp
Run Amperage	0.69/0.93 amp
Maximum Ambient Temperature	104°F (40°C)

* Also available with totally enclosed fan cooled motor.

Discharge Adjustment

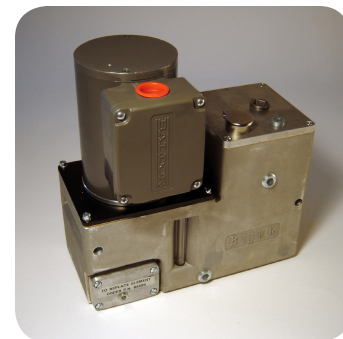
Lubricator is preset with bypass valve closed for maximum discharge of 125cc per minute (104cc with a 50 cycle motor). With lubricator at normal operating temperature on machine, desired discharge volume is obtained by adjusting the bypass needle valve to pre-calculated pressure on system pressure gauge (see *Bijur Engineering Manual*). Pressure is limited internally to 130 psi by a relief valve.

System & Limitations

Use Type C control units. Viscosity range is 100 to 10,000 SSU at operating temperature. See *Bijur Engineering Manual* for system limitations.

Startup Instructions

1. Fill reservoir with oil.
2. Start machine and see that oil flows at all bearings.



ATTENTION

Use clean oil only of the type and viscosity recommended by machine manufacturer.

ATTENTION

Replace filter group annually.

BIJUR DELIMON INTERNATIONAL

(919) 465 4448 LOCAL
(800) 631 0168 TOLL-FREE
(919) 465 0516 FAX

WWW.BIJURDELIMON.COM

2100 Gateway Centre Blvd., Suite 109
Morrisville, NC 27560

Maintenance

Check oil level daily and refill reservoir when required. Check the system periodically for loose or broken tubing, worn hoses, loose fittings and connections. Replace filter group annually.

Filter Replacement

125 micron porous metal filter on pump inlet, which should be inspected periodically and replaced as required (recommended annually). For replacement of filter element, specify filter group part #S-222.

Motor Replacement

1. Disconnect electrical supply from motor, disconnect system tubing and remove lubricator unit from reservoir.
2. Turn lubricator unit upside down—rest motor end on work table. Remove U-shaped pump outlet tubing.
3. Remove (4) pump mounting screws—pump and cover plate should now lift off motor.
4. Put replacement motor upside down on work table, put cover plate onto locating hub on motor and rotate cover plate until holes in plate line up with motor mounting holes.
5. Apply a heat stable grease to motor shaft tongue (Dow Corning Moly-Kote 44 or equal).
6. Make sure motor electrical connection is pointing in the desired direction. Put large O-ring into groove in face of pump body.
7. Turn tongue on motor shaft to face same direction as slot in pump shaft. Carefully put pump onto motor hub—pump should drop in place if shafts line up.
8. Insert (4) mounting screws through pump base and plate into base of motor.
9. Tighten motor mounting screws evenly with 20 in·lb of torque.
10. Replace U-shaped outlet tube, put lubricator unit into reservoir, connect system tubing and motor electrical supply.

BIJUR DELIMON INTERNATIONAL

(919) 465 4448 LOCAL
(800) 631 0168 TOLL-FREE
(919) 465 0516 FAX

WWW.BIJURDELIMON.COM

2100 Gateway Centre Blvd., Suite 109
Morrisville, NC 27560

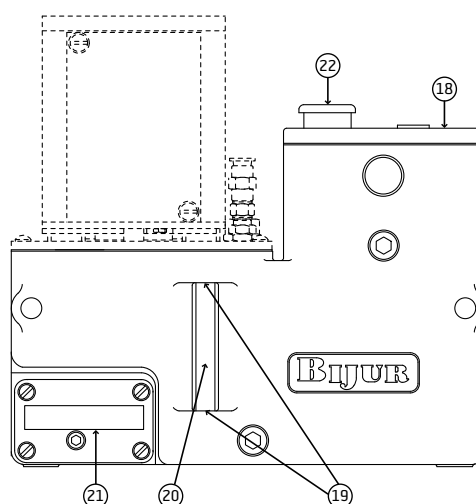
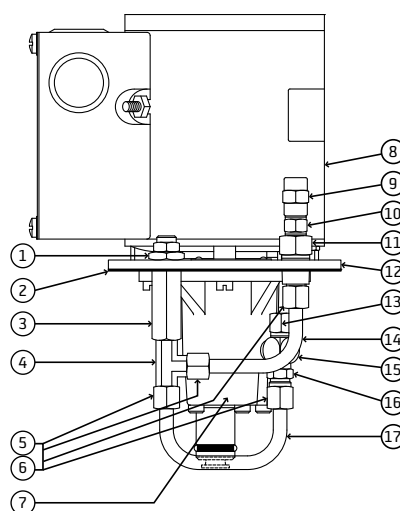
How to Order

Name	Motor	Reservoir Capacity	Part #
V5B Lubricator	Single phase, 115 VAC	TENV	1/2 gallon
		TEFC	1/2 gallon
			D2553
			23885

When ordering, specify name, motor, reservoir capacity and part number, e.g. V5B Lubricator, single phase, 115 VAC, TENV, 1/2 gallon, Part #D2553.

Service Parts

Item #	Description	Part #
1	Nut	A3711
2	Mounting gasket	B6903
3	Bypass valve assembly	B9102
4	Tee adapter	B7729
5	Compression bushing 4x	B6087
6	Compression sleeve 4x	B2520
7	Pump assembly	C2863
8	Motor (for D2553)	21844-1
	Motor (for 23885)	20803-1
9	Straight adapter	B6539
10	Check valve (2 lb)	B5880
11	Straight thru adapter	B7659
12	Mounting plate	C2848
13	Max pressure relief valve	B6898
14	Tubing	B8479
15	Tee connector	B4390
16	Straight adapter	B6086
17	Tubing	B8480
18	Reservoir assembly	D2559
19	Seal washer	17277
20	Sight tube	B6958
21	Filter	B6889
22	Filler cap	HF703



ATTENTION

Lubricator assembly (part #D2553) comes with motor (part #21844-1)

Lubricator assembly (part #23885) comes with motor (part #20803-1)

Pump/motor assembly (part #D2944) comes with motor (part #21844-1)

BIJUR DELIMON INTERNATIONAL

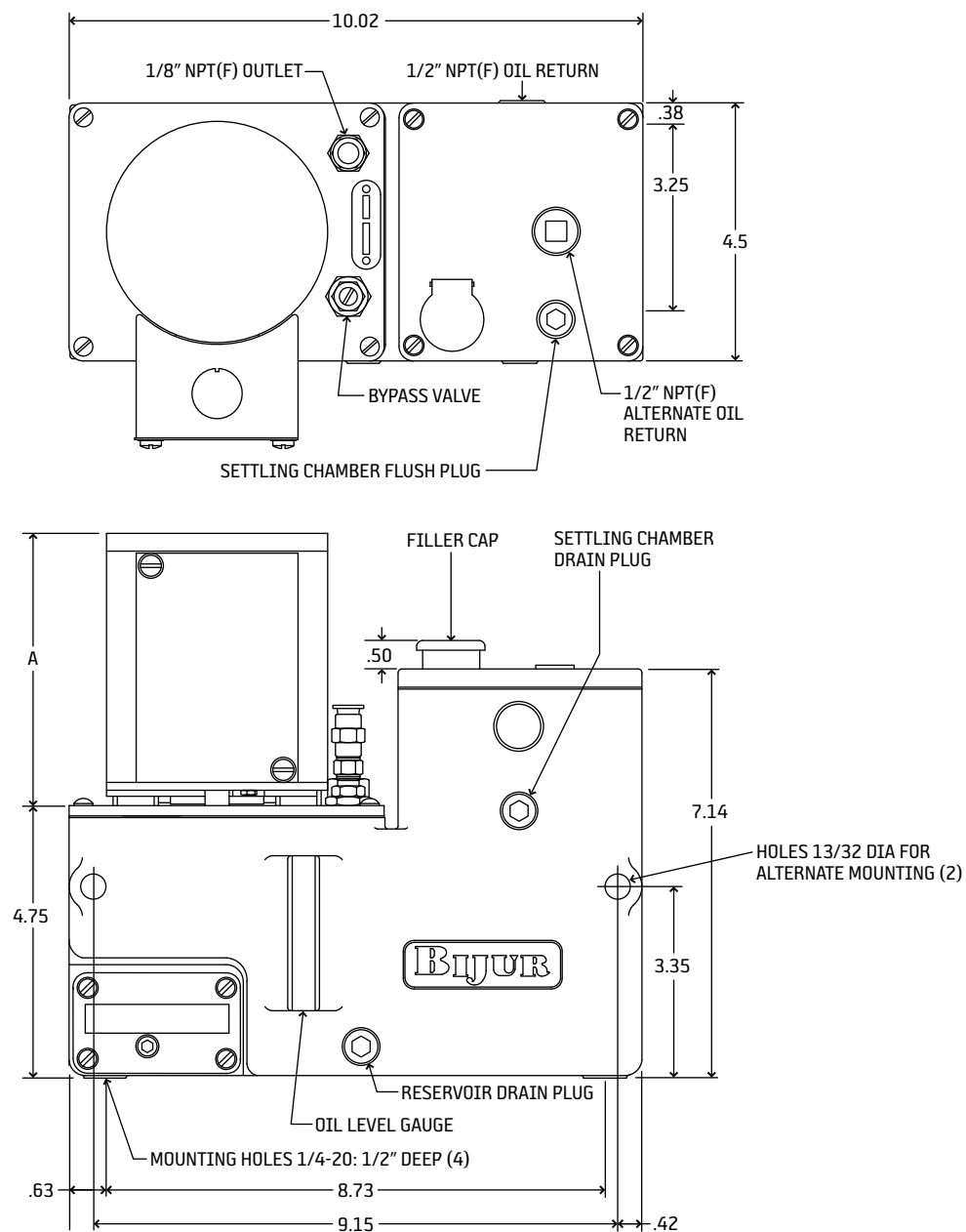
(919) 465 4448 LOCAL
(800) 631 0168 TOLL-FREE
(919) 465 0516 FAX

WWW.BIJURDELIMON.COM

2100 Gateway Centre Blvd., Suite 109
Morrisville, NC 27560

Dimensional Schematics

Measurements shown in inches.



Part #	A
D2553	5.6" (142.24mm)
23885	6.0" (152.4mm)

BIJUR DELIMON INTERNATIONAL

(919) 465 4448 LOCAL
(800) 631 0168 TOLL-FREE
(919) 465 0516 FAX

WWW.BIJURDELIMON.COM

2100 Gateway Centre Blvd., Suite 109
Morrisville, NC 27560