

Vent Valve

Pneumatic, Oil & Grease

General

Vent Valve is used with FL Series Injectors to relieve system pressure back to reservoir after a lubrication cycle. With a pneumatically operated pump, air pressure would be applied to the Vent Valve at the same time air pressure is supplied to the pump. When air pressure is relieved from pump and Vent Valve, lubricant moves past the valve seat and out the vent port. Normally, this lubricant would be piped back to the pump reservoir.

Technical Data

Maximum Air Pressure	120 psi (8 bar)
Minimum Air Pressure	40 psi (3 bar)
Maximum Lubricant Pressure	3800 psi (262 bar)
Mounting	Any position
Lubricant	Oil to NLGI #2 grease
Plating	Zinc

How to Order

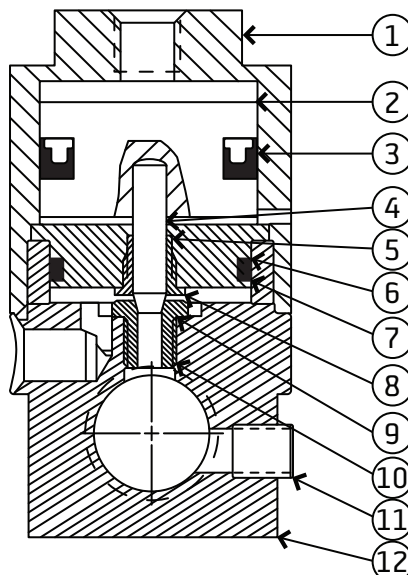
Name	Part #
Vent Valve	13850

When ordering, specify by name and part number, e.g. Vent Valve, Part #13850.

Service Parts

Item	Description	Part #
---	Vent Valve repair kit	13863
	Viton U-cup (3)	---
	Viton O-ring (5)	---
	Viton O-ring (7)	---
	Viton O-ring (9)	---
1	Cap	CAP-13750B
2	Air piston	PLU-13752A
4	Piston	PIS-13754A
6	Piston support	PIS-13751A
8	Piston guide	GID-13753A
10	Valve seat	SEA-13854A
11 ¹	Pipe plug (1/8" NPT)	U-119AC
12	Body	BOD13749B

¹ Optional vent valve safety unloader #14302 factory set @ approximately 4000 psi (276 bar)



ATTENTION

Lubricate seals before assembly.

BIJUR DELIMON INTERNATIONAL

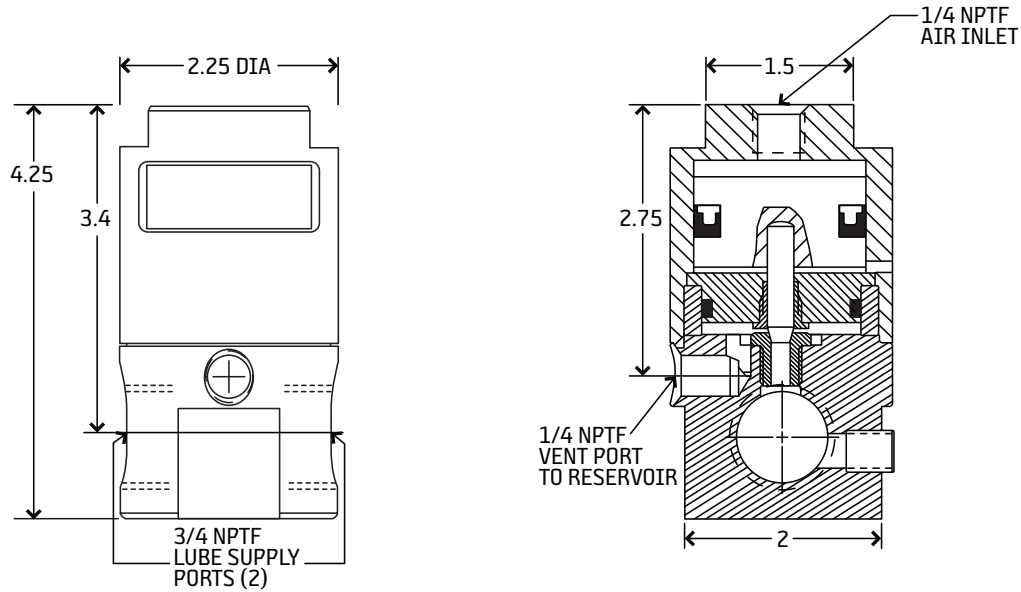
(919) 465 4448 LOCAL
(800) 631 0168 TOLL-FREE
(919) 465 0516 FAX

WWW.BIJURDELIMON.COM

2100 Gateway Centre Blvd., Suite 109
Morrisville, NC 27560

Dimensional Schematics

Measurements shown in inches.



BIJUR DELIMON INTERNATIONAL

(919) 465 4448 LOCAL
(800) 631 0168 TOLL-FREE
(919) 465 0516 FAX

WWW.BIJURDELIMON.COM

2100 Gateway Centre Blvd., Suite 109
Morrisville, NC 27560