

V5 Lubricator

Automatic Continuous, 60444 Davenport

Operation

The V5 Lubricator consists of a motor-driven gear pump with a controlled constant volume discharge. The fully automatic lubricating system is preset by the machine manufacturer for best operation. Discharge volume may be adjusted by turning the bypass valve counter-clockwise to reduce the pressure and thus automatically reduce the amount of oil, or by closing valve to increase pressure and oil flow.

Technical Data

Single Phase Motor	Motor	1/20 hp 50/60 Hz CONTINUOUS DUTY, T.E.F.C.
	Voltage	115 VAC
	Frequency	60/50 Hz
	Speed	1370/1670 rpm 50/60 Hz
	Maximum Ambient Temperature	104°F (40°C)
Pump	Outlet Connection	5/16-24 Female for 5/32" O.D. Tube (4mm) ¹
	Discharge	132cc (110 cc/50Hz)
	Bypass Regulation	Flow Bypass
	Relief Valve	50 psi
	Inlet Filter	60 Micron
	Outlet Line Filter	25 Micron
	Reservoir	8 Liter
	Level Switch	Single Contact N/O
	Pressure Switch	SPST N/O Opens @ 9+/-1 psi on falling pressure Closes @ 11+1-2psi on rising pressure
	Pressure Gauges	0-100 psi

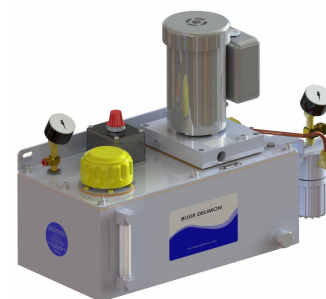
¹ Use B1371/B3783 compression bushing with B1061/B8272 sleeve

Discharge Adjustment

The V5 Lubricator is preset with a closed bypass valve for a maximum discharge of 132cc per minute. With lubricator at normal operating temperature on machine, desired discharge volume is obtained by adjusting the bypass valve to pre-calculated pressure on system pressure gauge. Pressure is limited internally to 50 psi by a relief valve.

System & Limitations

Use Type C control units. Viscosity range is 100 to 10,000 SSU at operating temperature. See *Bijur Engineering Manual* for system limitations.



V5 60444 Lubricator

ATTENTION

Use clean oil only of the type and viscosity recommended by machine manufacturer.

ATTENTION

Replace filters annually.

Notes:

P.N. 60444 Replaced P.N. 32283

BIJUR DELIMON INTERNATIONAL

(919) 465 4448 LOCAL
(800) 631 0168 TOLL-FREE
(919) 465 0516 FAX

WWW.BIJURDELIMON.COM

2250 Perimeter Park Dr., Suite 120
Morrisville, NC 27560

Startup Instructions

1. Fill reservoir with oil.
2. Start machine and see that oil flows at all bearings.

Maintenance

Check oil level daily and refill reservoir when required. Replace filter group annually.

Filter Replacement

An inlet filter provides primary protection of the lubricating system. The filters should be inspected every six months. If not clean, replace. To replace pump filter, unscrew filter assembly and replace with new assembly. To replace external in-line filter, unscrew filter housing, remove and replace filter element.

Motor Replacement

1. Disconnect the electrical supply from the motor, disconnect system tubing and remove lubricator unit from the oil reservoir by opening the 4x M5 screws that are holding the downspout to the pump top plate.
2. Turn the lubricator unit upside down and remove the filter inlet connector rod / filter from the pump by turning the hex of the filter carefully in a counter-clockwise direction. Also remove the inlet gear pump adaptor and O ring that connect the inlet filter rod to the gear pump.
3. Remove the two M4 SHC screws holding the gear pump to the downspout and remove the gear pump. Remove the three #8-32 socket cap screws holding the downspout and lift the downspout clear from the motor / adaptor plate.
4. Carefully pull the motor driveshaft / motor coupling from the motor shaft.
5. Replace the motor and carefully re-assemble the motor driveshaft / motor coupling onto the new motor shaft. The motor coupling must be equally spaced between the motor driveshaft and the motor shaft.
6. Re- assemble the downspout onto the motor by carefully lining up the three holes and inserting and tightening the three #8-32 socket cap screws.
7. Re-assemble the gear pump to the downspout, ensuring that the shaft of the gear pump meshes with the motor driveshaft. Place the inlet gear pump adaptor and O ring onto the gear pump and then insert the two M4 SHC screws to hold in place.
8. Re-assemble the filter inlet connector rod / filter into the gear pump adaptor.

BIJUR DELIMON INTERNATIONAL

(919) 465 4448 LOCAL
(800) 631 0168 TOLL-FREE
(919) 465 0516 FAX

WWW.BIJURDELIMON.COM

2250 Perimeter Park Dr., Suite 120
Morrisville, NC 27560

How to Order

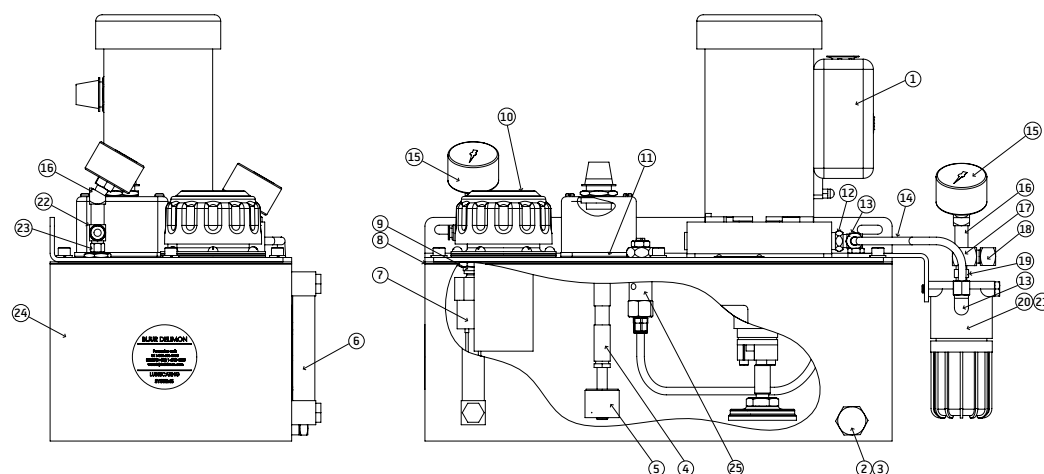
Name	Motor	Part #
V5 Lubricator	Single Phase	60444

When ordering, specify name, motor, reservoir capacity and part number, e.g. V5 Lubricator, single phase, Part #60444.

Service Parts 60444

Item	Description	Part #
1	Pump & Motor assembly	60802
2	O-ring seal	H0413
3	Drain plug	B9602
4	Extension rod	B9637
5	Level switch, N.O.	B9640
6	Sight gauge	19312
7	Pressure switch	26410
8	Reservoir gasket	26972
9	Coupling	27003
10	Filler cap	27073
11	Gasket, switch connection box	B7830-M
12	Thread adapter	B6131

Item	Description	Part #
13	Elbow	B7743
14	Outlet tubing	60969
15	Pressure gauge 100 psi	32806
16	Elbow	B7757
17	Tee	A4071
18	Tubing adapter body	A3080
19	Check valve 2lb.	B5880
20	Filter element for 19848-not shown	B6890
21	Filter (housing & element)	19848
22	Connector tee	A4042
23	Adapter	A4019
24	Reservoir	26969-1
25	Bypass	B9102



BIJUR DELIMON INTERNATIONAL

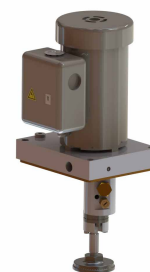
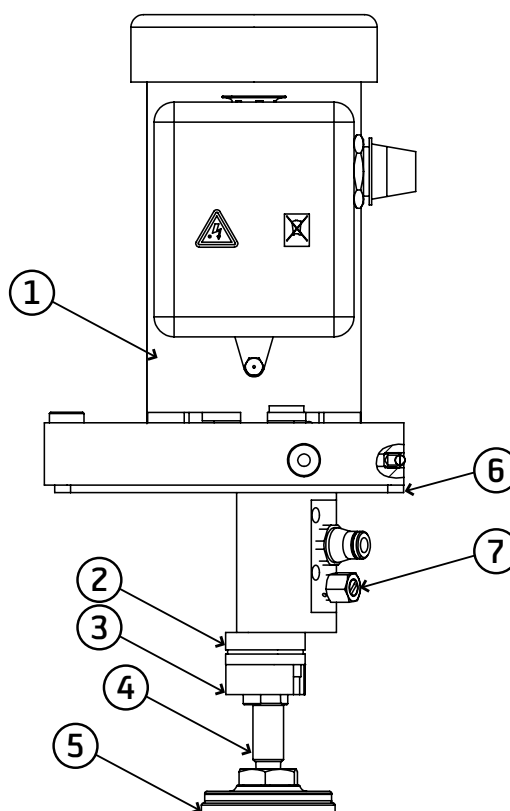
(919) 465 4448 LOCAL
(800) 631 0168 TOLL-FREE
(919) 465 0516 FAX

WWW.BIJURDELIMON.COM

2250 Perimeter Park Dr., Suite 120
Morrisville, NC 27560

Service Parts 60802

Item	Description	Part #
1	Motor	60361
2	Gear pump	25937-1
3	Pump inlet adapter	60715
4	Connector rod	B8482
5	Filter assembly	24342
6	Gasket	B6903-1
7	Relief valve 50lb.	B4974



V5 Pump & Motor assembly 60802

BIJUR DELIMON INTERNATIONAL

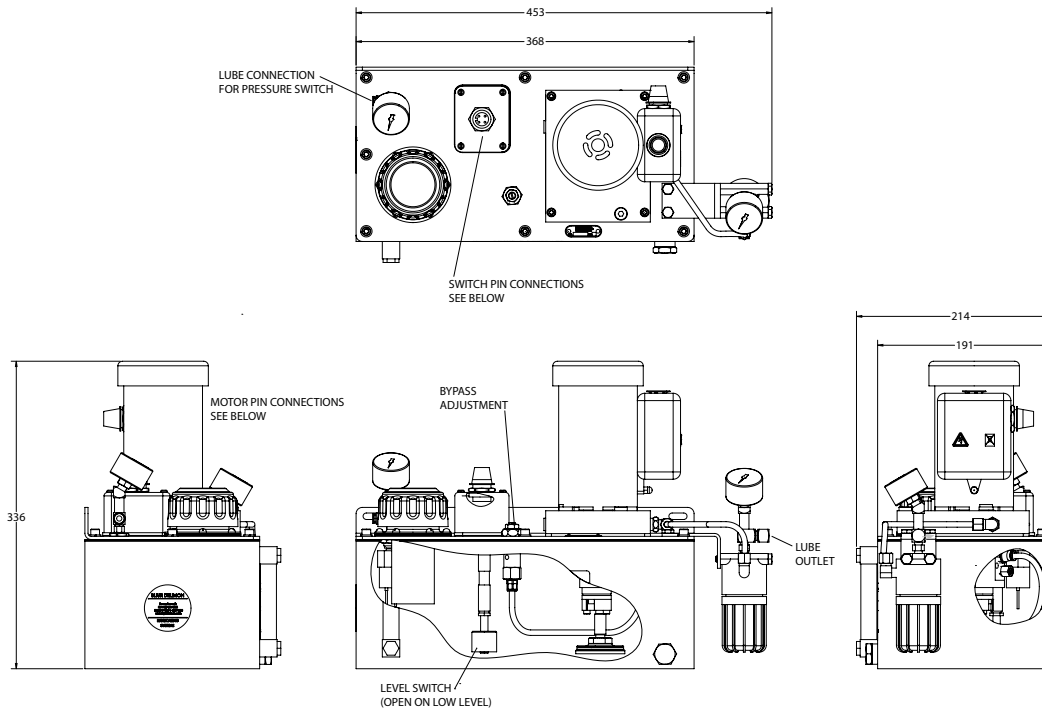
(919) 465 4448 LOCAL
(800) 631 0168 TOLL-FREE
(919) 465 0516 FAX

WWW.BIJURDELIMON.COM

2250 Perimeter Park Dr., Suite 120
Morrisville, NC 27560

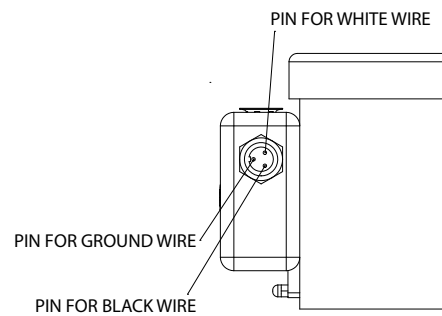
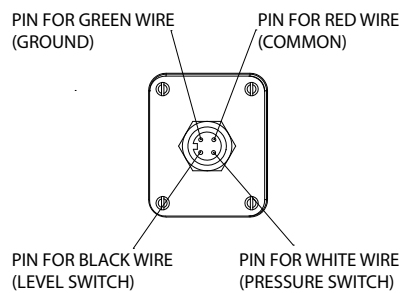
Dimensional Schematic 60444

Measurements shown in millimeters.



LEVEL SWITCH / PRESSURE SWITCH

MOTOR



BIJUR DELIMON INTERNATIONAL

(919) 465 4448 LOCAL
(800) 631 0168 TOLL-FREE
(919) 465 0516 FAX

WWW.BIJURDELIMON.COM

2250 Perimeter Park Dr., Suite 120
Morrisville, NC 27560