

V5C Lubricator

Automatic Continuous

General

The system consists of the following three basic elements:

1. Lubricator
2. Distribution tubing
3. Control units

The V5C Lubricator forces a constant flow of oil into a single line of distribution tubing branched to supply oil to the bearing surfaces through control units which proportion the correct oil film to each bearing.

Operation

The V5C Lubricator consists of a motor-driven gear pump with a controlled constant volume discharge. The fully automatic lubricating system is preset by the machine manufacturer for best operation. Discharge volume may be adjusted by turning the bypass valve counter-clockwise to reduce the pressure and thus automatically reduce the amount of oil, or by closing valve to increase pressure and oil flow.

Technical Data

Motor	TENV	1/20 hp, NEMA Frame L330, totally enclosed, non-ventilated
	TEFC	1/20 hp, NEMA Frame L330, totally enclosed, fan cooled
Voltage	115 VAC	
Frequency	50/60 Hz	
Speed	1370/1670 rpm	
Start Amperage	2.3/2.5 amp	
Run Amperage	0.69/0.93 amp	
Maximum Ambient Temperature	104°F (40°C)	

Discharge Adjustment

The V5C Lubricator is pre-set with a closed bypass valve for a maximum discharge of 125cc per minute (104cc with a 50 cycle motor). With lubricator at normal operating temperature on machine, desired discharge volume is obtained by adjusting the bypass needle valve to pre-calculated pressure on system pressure gauge (see *Bijur Engineering Manual*). Pressure is limited internally to 130 psi by a relief valve.

System & Limitations

Use Type C control units. Viscosity range is 100 to 10,000 SSU at operating temperature. See *Bijur Engineering Manual* for system limitations.



ATTENTION

Use clean oil only of the type and viscosity recommended by machine manufacturer.

ATTENTION

Replace filter group annually.

BIJUR DELIMON INTERNATIONAL

(919) 465 4448 LOCAL
(800) 631 0168 TOLL-FREE
(919) 465 0516 FAX

WWW.BIJURDELIMON.COM

2100 Gateway Centre Blvd., Suite 109
Morrisville, NC 27560

Startup Instructions

1. Fill reservoir with oil.
2. Start machine and see that oil flows at all bearings.

Maintenance

Check oil level daily and refill reservoir when required. Check the system periodically for loose or broken tubing, worn hoses, loose fittings and connections. Replace filter group annually.

Filter Replacement

An inlet filter provides primary protection of the lubricating system. The filter should be inspected every six months. If not clean, replace. To replace filter, remove snap ring which releases clamp ring, filter disc ring and screens. Insert new screens, coarse screen first and filter disc ring. Reassemble clamp and snap ring.

Motor Replacement

1. Disconnect electrical supply from motor, disconnect system tubing and remove lubricator unit from reservoir.
2. Turn lubricator unit upside down – rest motor end on work table. Remove U-shaped pump outlet tubing.
3. Remove (4) pump mounting screws – pump and cover plate should now lift off motor.
4. Put replacement motor upside down on work table, put cover plate onto locating hub on motor and rotate cover plate until holes in plate line up with motor mounting holes.
5. Apply a heat stable grease to motor shaft tongue (Dow Corning Moly-Kote 44 or equal).
6. Make sure motor electrical connection is pointing in the desired direction. Put large O-ring into groove in face of pump body.
7. Turn tongue on motor shaft to face same direction as slot in pump shaft. Carefully put pump onto motor hub – pump should drop in place if shafts line up.
8. Insert (4) mounting screws through pump base and plate into base of motor.
9. Tighten motor mounting screws evenly with 20 in-lb of torque.
10. Replace U-shaped outlet tube, put lubricator unit into reservoir, connect system tubing and motor electrical supply.

BIJUR DELIMON INTERNATIONAL

(919) 465 4448 LOCAL
(800) 631 0168 TOLL-FREE
(919) 465 0516 FAX

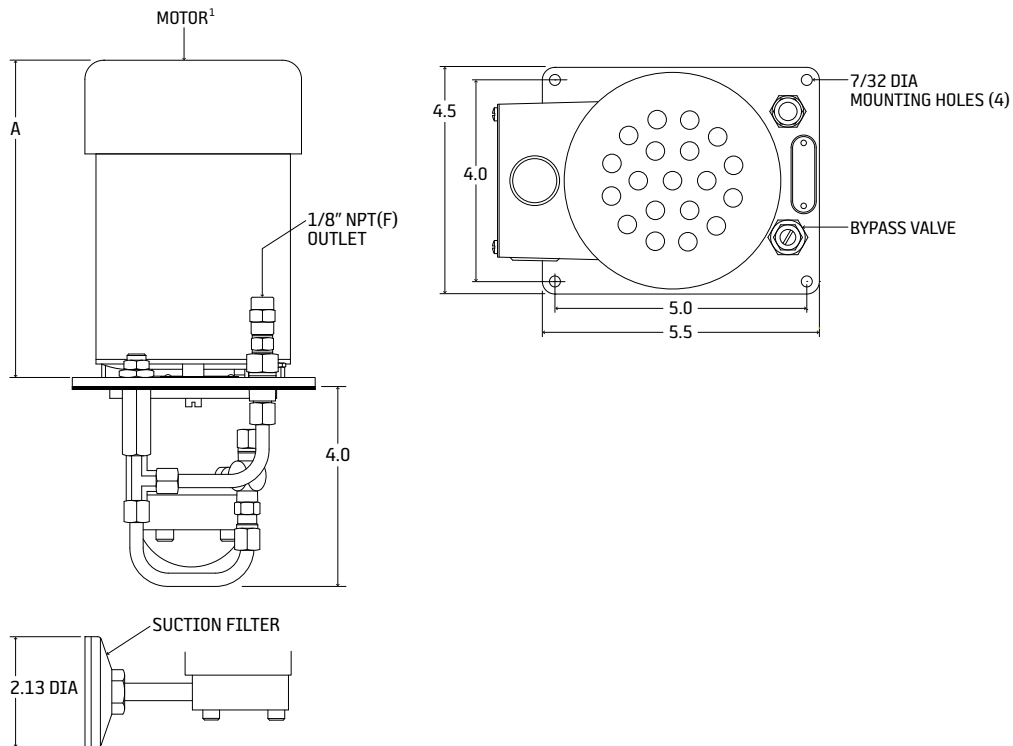
WWW.BIJURDELIMON.COM

2100 Gateway Centre Blvd., Suite 109
Morrisville, NC 27560

Dimensional Schematics

Measurements shown in inches.

¹ Motor shape is Bijur Delimon's option.



Part #	A
D2957	5.5"
32659	6"

BIJUR DELIMON INTERNATIONAL

(919) 465 4448 LOCAL
(800) 631 0168 TOLL-FREE
(919) 465 0516 FAX

WWW.BIJURDELIMON.COM

2100 Gateway Centre Blvd., Suite 109
Morrisville, NC 27560