

Vent Valve Assembly

Kit #32087

General

The Vent Valve Assembly Kit is comprised of the 32087 Vent Valve, high pressure hose assemblies and fittings necessary to complete installation to a drum pump. The kit is normally used with oil or grease lubricating systems incorporating air operated reciprocating pumps to actuate single line parallel ExactoServe injectors.

In operation the valve lets pump output build up pressure to achieve discharge from all injectors. System pressure is then relieved from distribution network through the valve's vent port to let injectors reset for the next operating cycle.

Operation

An electric 3/2 way solenoid is used to control the drum pump and also controls the vent valve.

When the solenoid valve is energized, compressed air is supplied to the pump and vent valve air inlet. Incoming air pushes the valve piston to forward position. This action closes the vent port. Lubricant from the pump flows through the valve supply ports into distribution network.

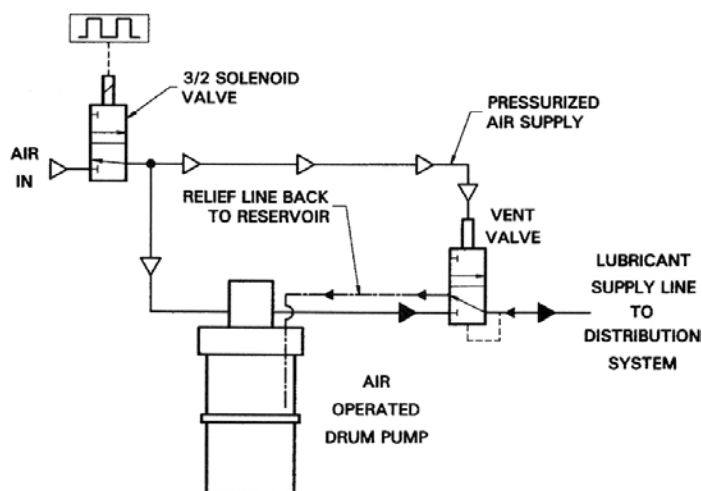
When the solenoid valve is de-energized, air pressure to the pump and vent valve is removed. The valve piston returns to rest position and opens vent outlet port. Pressure in the system distribution line network is relieved when excessive grease flows through vent port back into the reservoir. This action allows ExactoServe injectors to reset for the next cycle.



Technical Data

Maximum Air Pressure	120 psi (8 bar)
Minimum Air Pressure	40 psi (3 bar)
Maximum Lubricant Pressure	3800 psi (262 bar)
Mounting	See <i>Installation</i>
Lubricant	Oil to NLGI grade 2 grease
Plating	Zinc

Installation



BIJUR DELIMON INTERNATIONAL

(919) 465 4448 LOCAL
 (800) 631 0168 TOLL-FREE
 (919) 465 0516 FAX

WWW.BIJURDELIMON.COM

2100 Gateway Centre Blvd., Suite 109
 Morrisville, NC 27560

How to Order

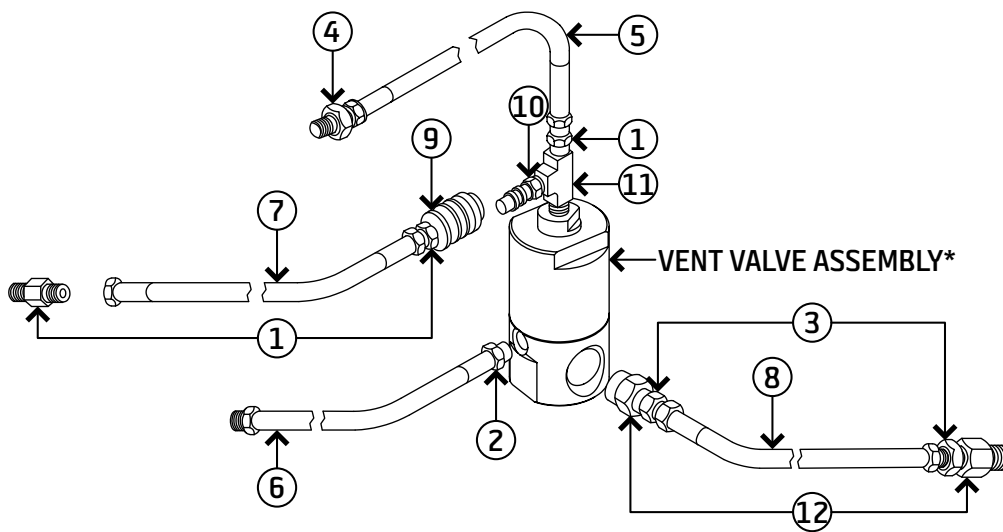
Name	Part #
Vent Valve Assembly Kit	32087

When ordering, specify by name and part number, e.g. Vent Valve Assembly Kit, Part #32087.

Service Parts

ATTENTION

* Refer to Datasheet #35976: Vent Valve for service parts list.



Item	Description	Part #
1	Adapter: Straight, 1/4"-18 Pipe x 3/4-16	U43148
2	Adapter: Straight, 1/4"-18 Pipe x 9/16-18	U43146
3	Adapter: Straight, 3/8"-18 Pipe x 3/4-16	U43168
4	Adapter: Straight, 1/2"-14 Pipe x 3/4	U43188
5	Hose Assembly	201369
6	Hose Assembly: 24" long	UX718607024
7	Hose Assembly: 72" long	200513
8	Hose Assembly: 6' long	200549
9	Disconnect Socket	U422-BC
10	Disconnect Plug	U421-B
11	Tee	U1568
12	Bushing: 3/4" (M) x 3/8" (F)	U104E3

BIJUR DELIMON INTERNATIONAL

(919) 465 4448 LOCAL
 (800) 631 0168 TOLL-FREE
 (919) 465 0516 FAX

WWW.BIJURDELIMON.COM

2100 Gateway Centre Blvd., Suite 109
 Morrisville, NC 27560